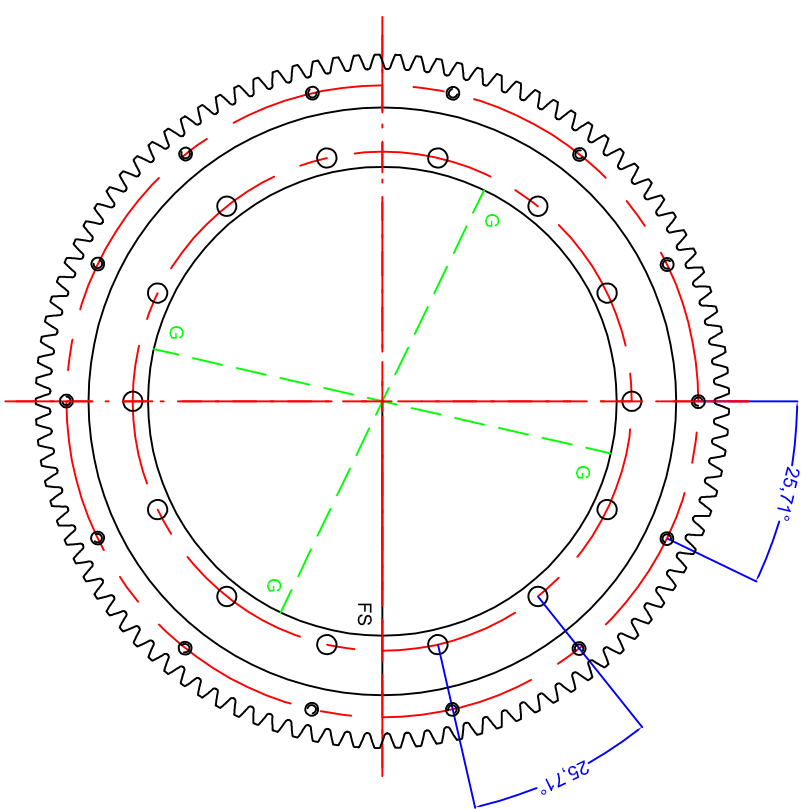
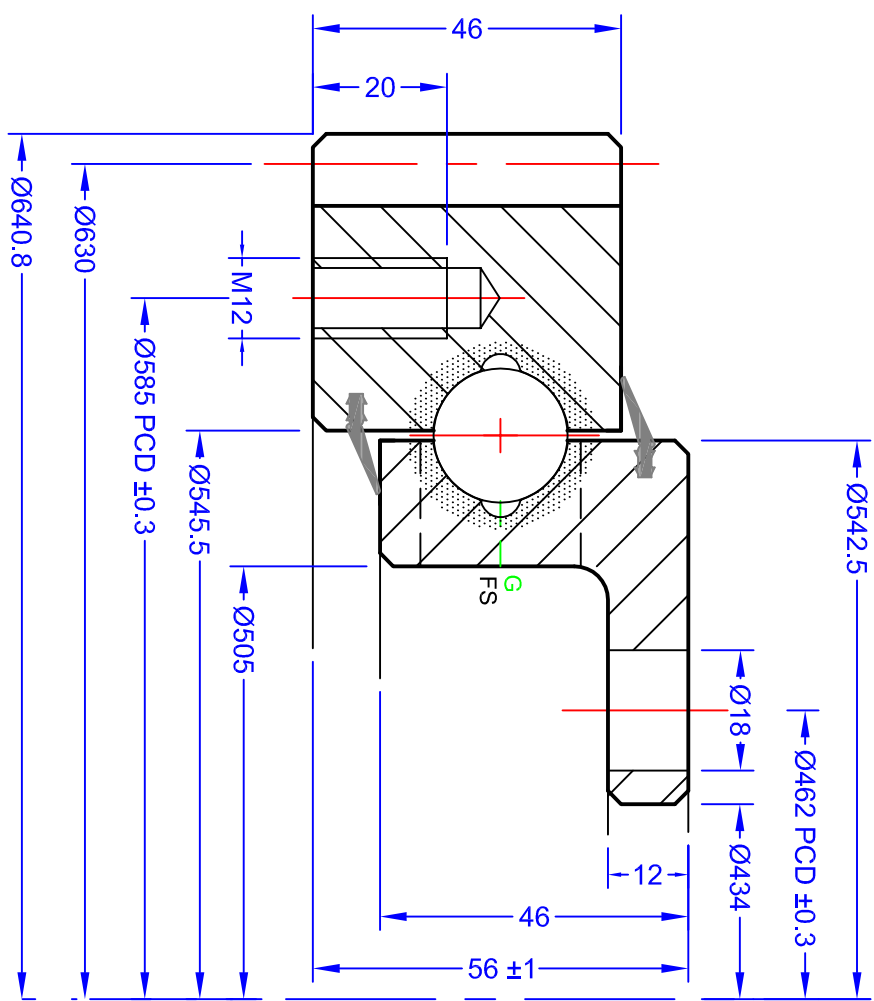


GEN. TOLERANCES	0.5 - 6	±0.1	6 - 30	±0.2	30 - 120	±0.3	120 - 315	±0.5	315 - 1000	±0.8	1000 - 2000	±1.2	2000 - 4000	±2	4000 - 8000	±3
GEN. MACHINING	▽	0.4	▽	1.6	▽	3.2	6.3	▽	12.6	▽	25	▽	50	▽	100	▽

A



VIEW ON 'A' SHOWING DRILLING PATTERN AND OTHER DETAILS

GEAR DATA

HARDED GEAR	NO	MODULE (m)	6
NUMBER OF TEETH (z)	105	DP	
PRESSURE ANGLE (α)	20°	CALCULATED GEAR STRENGTH	
ADDENDUM COEFFICIENT (k)	0	INNER	14 =
PROFILE CORRECTION (xm)	0 mm	OUTER	14 =
TRUNCATION (km)	-0.6 mm	MOUNTING HOLES	Ø 18
PITCH CIRCLE DIAMETER	630 mm	MOUNTING HOLES	M12
MEASUREMENT ON K TEETH	mm	GREASE HOLES	4 X M8
RUNOUT NOT HARDED/HARDED	mm	LOADING PLUG	'FS'
		SOFT ZONE	'R'
		SEAL SIZE	TBA

Designed in accordance with designated QCB SLEWING RING STANDARDS
 Non toleranced dimensions to ISO 2768-1 m
 All burrs and sharp edges to be removed. Standard corner chamfer 1mm x 45°
 Internal radial and axial clearance figures to QCB standard 2014 or revisions thereof
 The HARDFNESS GAP is to be indicated by stamped letter R or a PAINT mark on the exterior surface
 The high point of gear eccentricity to be indicated by GREEN or BLUE paint on 3 teeth

BOLT DATA

AXIAL PLAY	0.10-0.22 mm
RADIAL PLAY	0.10-0.22 mm
TURNING TORQUE	Nm
MATERIAL	42CrMo4 Q&T
WEIGHT	40 kg (est)

REV	DATE	MODIFICATION	REVISED BY
1			

QCB Bearings

SLEWING RINGS & DRIVES

Orleton Lane, Wellington, Telford, TF1 2BG, UK

Imported by NBC Group Ltd

P: 01962 222300 F: 01962 242938

www.nbcgroup.co.uk

QCB® is a registered trademark of NBC Group Ltd

OCB or NBC DRAWING NUMBER

FEGG 650 20 00 AA LM

OCB RS 11/2016

DRAWN:	LM
DATE:	21/2/2015
CHECKED:	LM