



# THE CHAMPION OF AUTOMATIC SINGLE-POINT LUBRICATORS



**EASY TO USE**

**INFORMATIONS**

**BENEFITS**

**APPLICATIONS**

**DISCHARGE TIMES**

**INSTALLATION**

**ACCESSORIES**



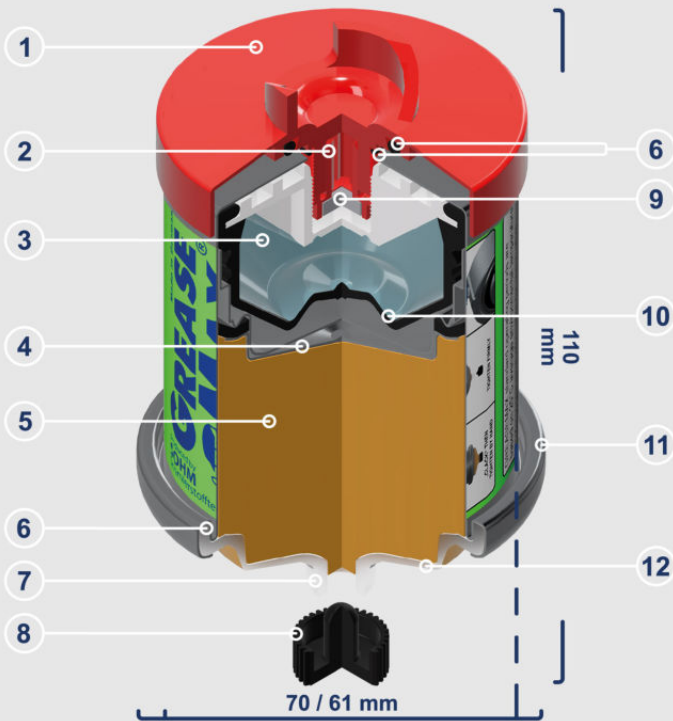
# INFORMATIONS

## Optimum machine lubrication made easy

GREASEMAX the automatic lubricator is the ideal solution for any lubrication point previously serviced by hand.

Throughout its discharge period, GREASEMAX delivers a continuous and precise supply of fresh lubricant, ensuring reliable and consistent lubrication at all times.

Trusted by professionals worldwide, GREASEMAX is valued across industries for its exceptional robustness, reliability, and maintenance-free operation. Even under shock, strong vibration, or extreme conditions, GREASEMAX guarantees optimum lubrication to keep your equipment running smoothly.



- |                      |                       |
|----------------------|-----------------------|
| 1 Starter Cap        | 7 Thread BSP 1/4" m   |
| 2 Activating screw   | 8 Closing cap         |
| 3 Electrolyte liquid | 9 Controlling element |
| 4 Metal piston       | 10 Diaphragm          |
| 5 Lubricant 120cc    | 11 Metal body         |
| 6 Seals              | 12 Empty indicator    |

## Activation and function

GREASEMAX operates by a chemical reaction that is activated by screwing in the starter cap.

During the discharging period, GREASEMAX continuously supplies the lubrication point with fresh lubricant.

Enjoy the benefits of cost-effective, self-regulating, maintenance-free automatic lubrication, for all types of lubrication points. For further information, visit: [www.greasemax.com](http://www.greasemax.com)

**No deformation or malfunction** thanks to the solid metal body and electronic-free design even under heat, cold, high humidity, and dust.

ⓘ For maximum performance, select the required discharge period using the table on page 4.

**Hard fact:** GREASEMAX sets the industry standard as the most robust automatic single-point lubricator, engineered for unmatched reliability in even the toughest conditions.

## User-friendly installation

Thanks to illustrated step-by-step installation guide.



GREASEMAX is filled with premium lubricants for maximum equipment uptime and performance reserves.

Find our standard lubricant selection and recommendations on our website: [www.greasemax.com](http://www.greasemax.com)  
**Custom special fillings** are available on request.



# BENEFITS



## Simplest installation

From the very first installation, you benefit from quick and easy setup. GREASEMAX operates maintenance-free, requires no time-consuming adjustments, and ensures optimal, efficient machine lubrication. This allows your team to focus on core operations while reducing downtime, errors, and maintenance effort. Discover how easily GREASEMAX integrates into your maintenance routine.

## Reliable lubrication for maximum productivity

24 hours a day. Reliable grease supply for all equipped lubrication points.



Continuous supply of fresh lubricant during operation.



Optimum lubrication without under- or over-lubrication.



Easy and reliable planning of maintenance and servicing activities.



Reduced friction and wear for extended component lifetime.

## Turn reliability into economic advantage

- ✓ Offers fully automatic, round-the-clock lubrication with zero labor costs.
- ✓ Prevents premature failures and costly replacements by avoiding under-lubrication.
- ✓ Boosts return on investment by reducing costly downtimes.
- ✓ Lowers maintenance and repair costs thanks to reduced wear.
- ✓ Reduces energy and lubricant consumption, improving overall efficiency.



## Maximum occupational safety

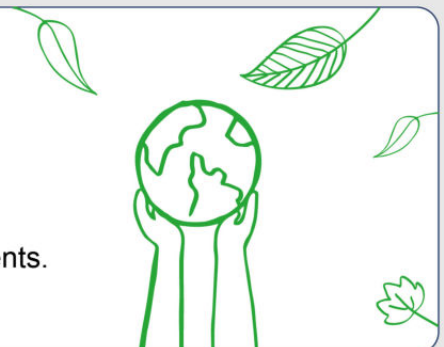
With GREASEMAX, every workplace becomes a safer environment.



- ✓ Less frequent visits to lubrication points reduces the time spent in hazardous areas.
- ✓ GREASEMAX can reduce the risk of accidents at work **by up to 92%**.
- ✓ Lower exposure to noise and vibration. Less time spent near running machinery minimizes physical strain.

## Your sustainable efficiency benefits

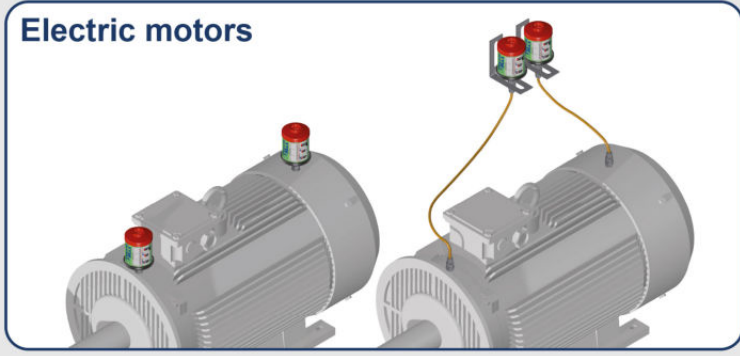
- ✓ Maximizes component lifetime by minimizing wear and tear.
- ✓ Cuts energy and lubricant consumption through precise lubrication.
- ✓ Prevents environmental contamination from lubricant leaks.
- ✓ Sustainable by design, operates without electrical or mechanical components.
- ✓ Lowers CO<sub>2</sub> footprint by reducing energy demand and service intervals.



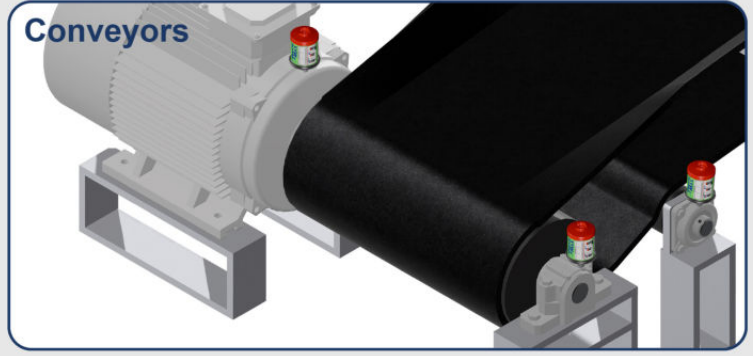
# APPLICATIONS

① Follow the manufacturer's instructions. Lubrication points vary depending on the application and manufacturer.

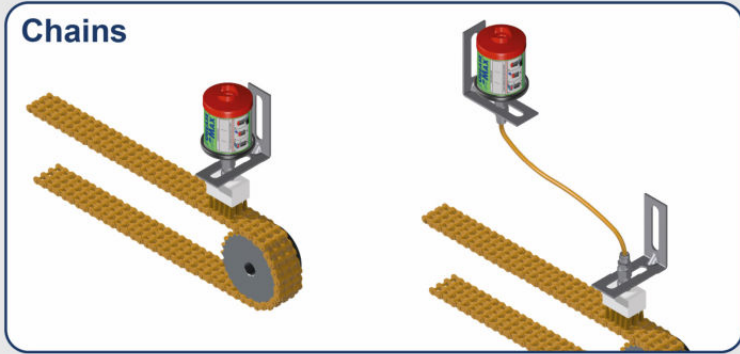
## Electric motors



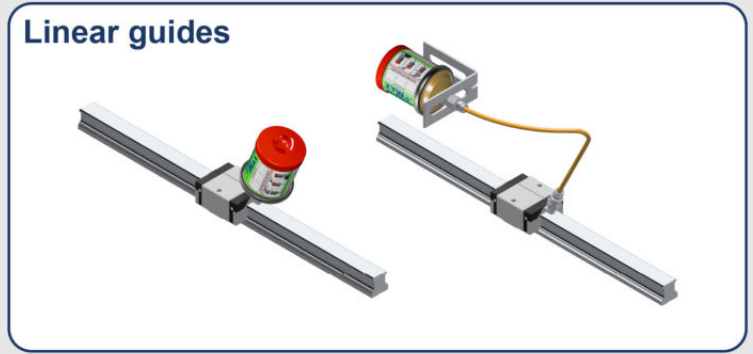
## Conveyors



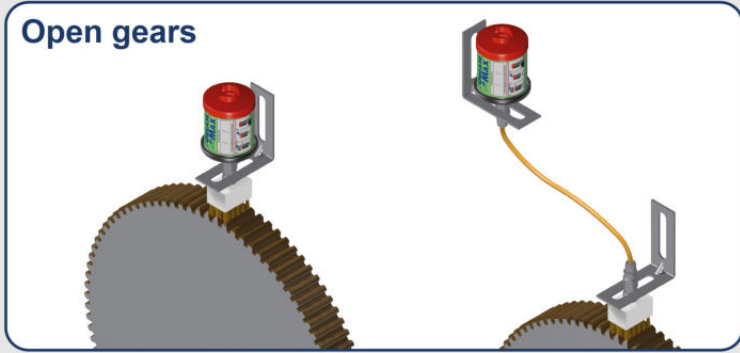
## Chains



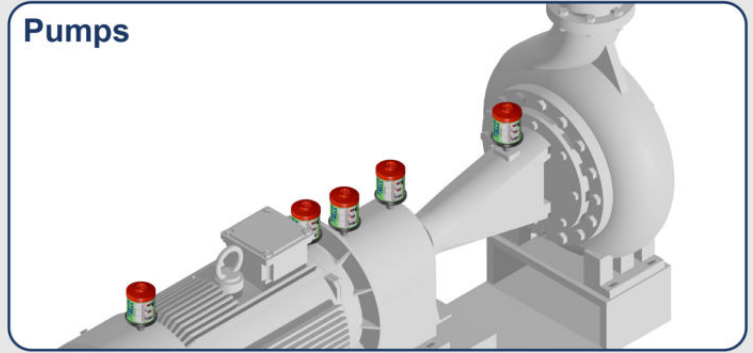
## Linear guides



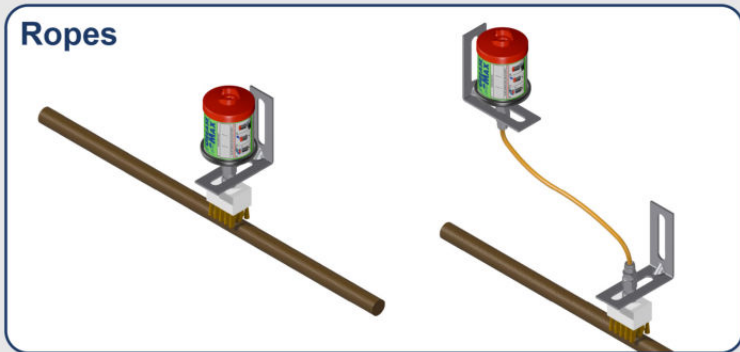
## Open gears



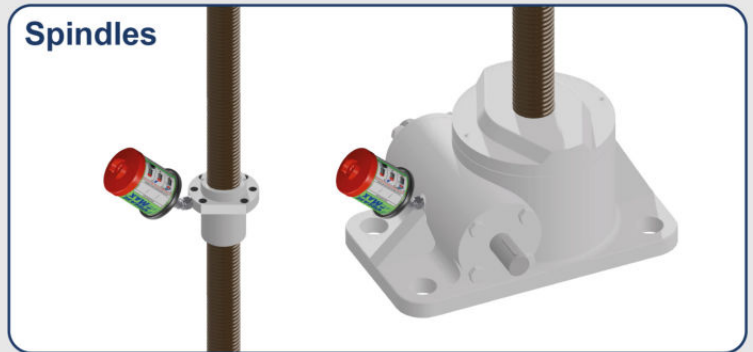
## Pumps



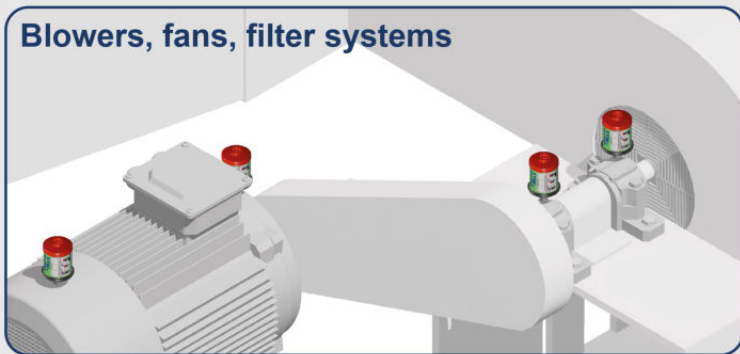
## Ropes



## Spindles



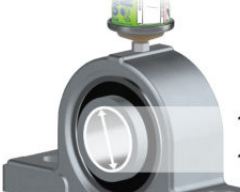




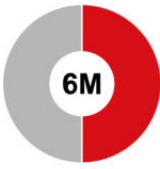



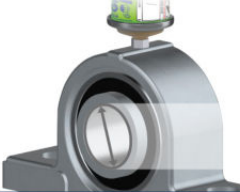

## Blowers, fans, filter systems







## Rolling, plain, ball bearings



# DISCHARGE TIMES AND RATES

<p>Discharge 1 month:</p> 	<p>For shaft diameters:</p>  <p>100 mm 160 mm</p>	<p>Lubricant requirement:</p>  <p><b>4</b> g per day</p>	<p>Start-up time:</p> <p><b>8</b> hours</p>
<p>Discharge 3 months:</p> 	<p>For shaft diameters:</p>  <p>60 mm 100 mm</p>	<p>Lubricant requirement:</p>  <p><b>4</b> g per ½ week</p>	<p>Start-up time:</p> <p><b>24</b> hours</p>
<p>Discharge 6 months:</p> 	<p>For shaft diameters:</p>  <p>30 mm 60 mm</p>	<p>Lubricant requirement:</p>  <p><b>4</b> g per week</p>	<p>Start-up time:</p> <p><b>30</b> hours</p>
<p>Discharge 12 months:</p> 	<p>For shaft diameters:</p>  <p>up to 30 mm</p>	<p>Lubricant requirement:</p>  <p><b>4</b> g per ½ month</p>	<p>Start-up time:</p> <p><b>48</b> hours</p>

	 Discharge 1 month	 Discharge 3 months	 Discharge 6 months	 Discharge 12 months				
∅ Ambient temperature	Discharge time (months)	Lubricant discharge g / day	Discharge time (months)	Lubricant discharge g / day	Discharge time (months)	Lubricant discharge g / day	Discharge time (months)	Lubricant discharge g / day
65 °C	0,15	24	0,5	8	1	3,6	2	1,8
55 °C	0,3	12	1	3,6	2	1,8	4	0,9
45 °C	0,5	7,3	1,5	2,3	3	1,2	6	0,6
35 °C	0,7	5,2	2,5	1,5	4,5	0,8	9	0,4
<b>25 °C*</b>	<b>1</b>	<b>3,6</b>	<b>3</b>	<b>1,2</b>	<b>6</b>	<b>0,6</b>	<b>12</b>	<b>0,3</b>
15 °C	1,5	2,3	4,5	0,8	9	0,4	18	0,2
5 °C	2	1,8	6	0,6	14	0,26	28	0,13
-5 °C	4	0,9	12	0,3	24	0,15	48	0,08
-15 °C	6	0,6	18	0,2	—	—	—	—

\* Reference temperature 25 °C

# INSTALLATION INSTRUCTIONS

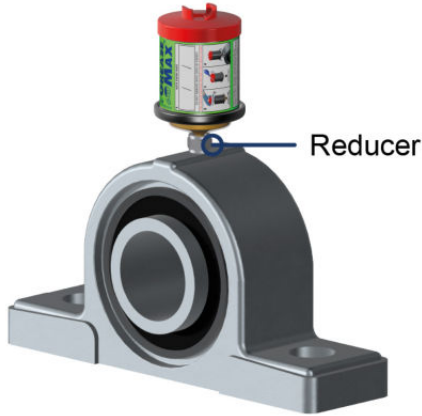
## 1. SELECT MOUNTING TYPE AND ACCESSORIES

EXAMPLE: BEARING LUBRICATION

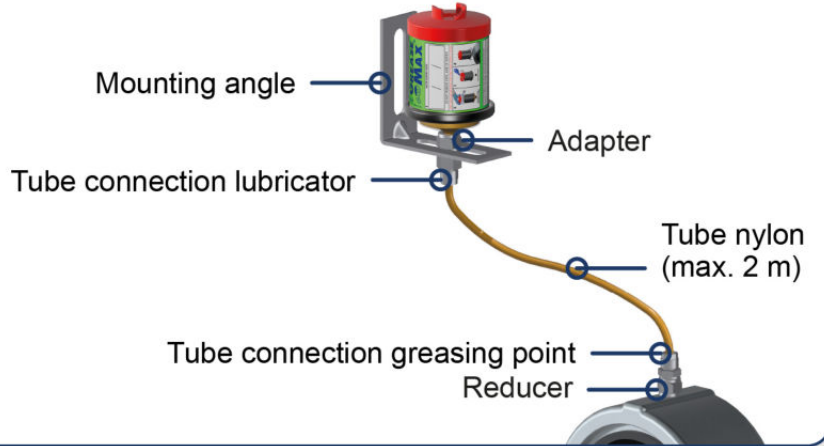
Mounting positions



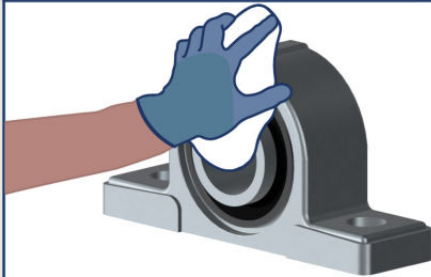
Direct mounting



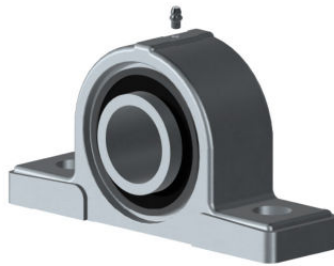
Remote mounting



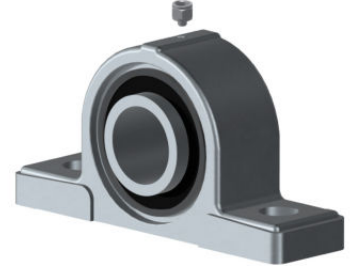
## 2. PREPARE THE LUBRICATION POINT (FOR FIRST-TIME INSTALLATION)



Cleanse the lubrication point.



Remove the grease nipple.



Screw in the reducer and fit the tube line if necessary.

Direct mounting

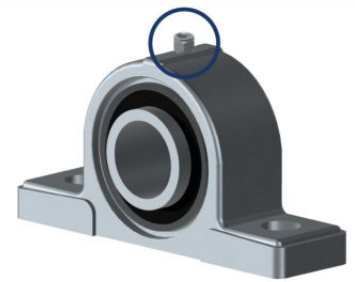


Fill lubrication point and connecting parts with identical lubricant.

Remote mounting



Fill lubrication point and tube line with identical lubricant.



Check for leaks.

## 3. ACTIVATION AND INSTALLATION OF GREASEMAX

Wear protective gloves and safety goggles during activation and installation



Screw in the starter cap, after „CLACK“ tighten to the maximum by hand.



Use a tool to tighten the starter cap firmly.



Note the replacement date and remove the closing cap.



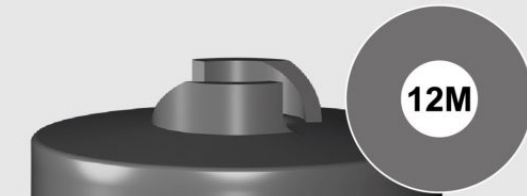
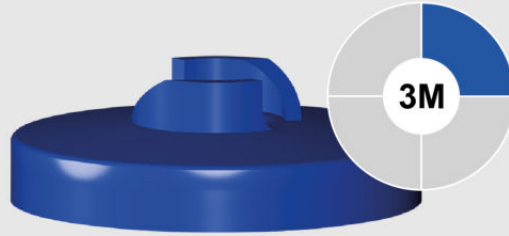
Screw GREASEMAX into the lubrication point.

## ACCESSORIES



<b>Item:</b>	<b>Order no.:</b>
Ball valve with rotary handle, BSP 1/4" female, male	AK000104
Solenoid valve for 220 V machine control, BSP 1/8" female, female	AV220108
Solenoid valve for 24 V machine control, BSP 1/8" female, female	AV024108
Reducer BSP 1/4" female, M 6 x 1 male	AF060100
Reducer BSP 1/4" female, M 8 x 1 male	AF080100
Reducer BSP 1/4" female, M 8 x 1.25 male	AF080125
Reducer BSP 1/4" female, M 10 x 1 male	AF100100
Reducer BSP 1/4" female, M 10 x 1.5 male	AF100150
Reducer BSP 1/4" female, M 12 x 1.5 male	AF120150
Reducer BSP 1/4" female, M 12 x 1.75 male	AF120175
Reducer BSP 1/4" female, M 14 x 2 male	AF140200
Reducer BSP 1/4" female, M 16 x 1.5 male	AF160150
Reducer BSP 1/4" female, BSP 1/8" male	AF000108
Reducer BSP 1/4" female, BSP 3/8" male	AF000308
Reducer BSP 1/4" female, BSP 1/2" male	AF000102
Adapter BSP 1/4" female, male	AA000104
Hexagonal nipple BSP 1/4" male, male	AX000104
Sleeve BSP 1/4" female, female	AM104000
T-connector BSP 1/4" female, female, male	AT000104
Y-connector BSP 1/4" female, female, male	AY000104
Non-return valve for GREASEMAX with oil BSP 1/4" female, male	AR000104
Lubricating brush 5 x 3 cm, BSP 1/4" female	AP020045
Angle 45 degrees BSP 1/4" female, male	AW450104
Angle 90 degrees BSP 1/4" female, male	AW900104
Mounting bracket for GREASEMAX	AH000500
Mounting angle universal slotted hole 40 X 100 X 3 mm	AMW104
Plastic tube, PL 6/8	ASS00100
Tube connection for GREASEMAX BSP 1/4" female/ PL 6/8	ASI00104
Tube connection for lubrication point BSP 1/4" male/ PL 6/8	ASA00104
Tube connection for lubrication point BSP 1/8" male/ PL 6/8	ASA00108
Metal extension BSP 1/4" female, male/ 35 mm	AM104035
Metal extension BSP 1/4" female, male/ 51 mm	AM104051
Metal extension BSP 1/4" female, male/ 85 mm	AM104085
Metal extension BSP 1/4" female, male/ 104 mm	AM104104

**Further accessories are available on request.**



Sohm Schmierstofftechnik e.K.  
Scheerbünd 6, 77654 Offenburg  
Germany  
+49 (0) 781 72084  
sales@greasemax.com

**Kindly recommended:**

**NBC Telford**

Unit D, Stafford Park 18, Telford, TF3 3BN  
T +44 (0)1952 222300  
E telford@nbcgroup.co.uk

**NBC Belfast**

20 Ravenhill Road, Belfast, BT6 8EA  
T +44 (0)2890 732321  
E belfast@nbcgroup.co.uk

