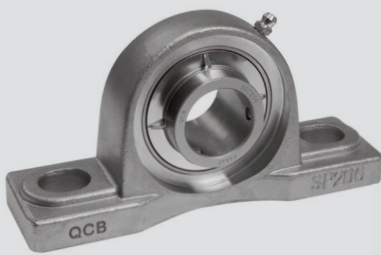




STAINLESS  
STEEL  
BEARING  
UNITS

# STAINLESS STEEL BEARING UNITS







# An extensive product range...

QCB® stainless steel bearing housings are made of AISI 440C stainless and are completely interchangeable with conventional cast-iron housings, resulting in a maintenance free housing that will never rust or corrode.

Developed for use where standards of cleanliness are important or a significant amount of liquid and higher temperatures are present such as in the food and beverage industries where the QCB Thermoplastic units are not suitable.

## NO PLATING OR COATING TO CHIP OR PEEL

Coated or plated cast-iron housings can scratch, chip and peel. Because QCB® Stainless housings are solid stainless steel, coatings are not required for protection. If they are scratched or chipped there is no vulnerable cast-iron to be exposed.

## QCB® STAINLESS HOUSINGS ARE DURABLE

With a high tensile strength and the ability to be pressure washed with hot water, QCB® Stainless housings will stand up to the toughest applications.

## ALL OTHER PARTS STAINLESS STEEL

To maximise corrosion resistance, not only is the bearing completely stainless, but so are the grease nipples. Inserts are filled with a high-quality (FDA Approved) food-grade grease.

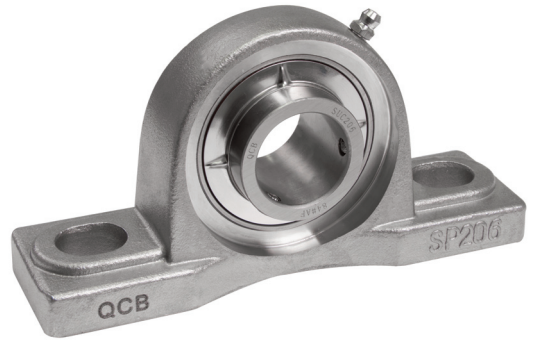
## USED IN MANY INDUSTRIES

Because of their corrosion resistant properties, QCB® Stainless housings find application in a wide variety of industries including food processing; canning; bottling; pharmaceutical; chemical processing and other general industrial applications.

## A COMPLETE RANGE

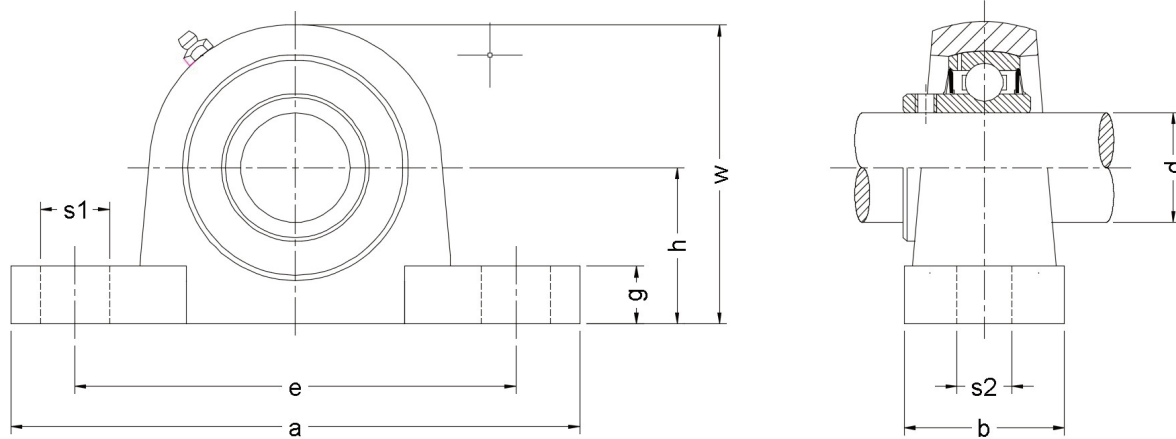
QCB® Stainless bearings are available in a wide range of styles and sizes, with inch and metric inserts. Snap-on closed-end covers are supplied as standard with through shaft style and back seals available as an optional extra (where applicable).

## QCB... TURNING YOUR WORLD



# SSUCP 200 SB Series

Stainless pillow block housing with SUC insert



QCB reference	Insert bore		Dimensions								Bolt size	Weight kg
			h	a	e	b	s1	s2	g	w		
	mm	inch	mm	mm	mm	mm	mm	mm	mm	mm		
SSUCP 201 SB	12	1/2	33.3	127	95	38	14	11	14.2	65.5	M10	0.12
SSUCP 202 SB	15	9/16 ; 5/8	33.3	127	95	38	14	11	14.2	65.5	M10	0.12
SSUCP 203 SB	17	11/16	33.3	127	95	38	14	11	14.2	65.5	M10	0.12
SSUCP 204 SB	20	3/4	33.3	127	95	38	14	11	14.2	65.5	M10	0.12
SSUCP 205 SB	25	13/16 ; 7/8 ; 15/16 ; 1	36.5	140.5	105	38	14	11	14.5	71	M10	0.14
SSUCP 206 SB	30	1.1/16 ; 1.1/8 ; 1.3/16 ; 1.1/4	42.9	163	119	46	18	14	17.8	84	M12	0.20
SSUCP 207 SB	35	1.1/4 ; 1.5/16 ; 1.3/8 ; 1.7/16	47.6	168	127	48	18	14	18	94.5	M12	0.25
SSUCP 208 SB	40	1.1/2 ; 1.9/16	49.2	184	137	54	18	14	19.5	99	M12	0.36
SSUCP 209 SB	45	1.5/8 ; 1.11/16 ; 1.3/4	54	192	146	54	20	17	23	106	M16	0.45
SSUCP 210 SB	50	1.13/16 ; 1.7/8 ; 1.15/16 ; 2	57.2	206	159	60	20	17	23	114	M16	0.55

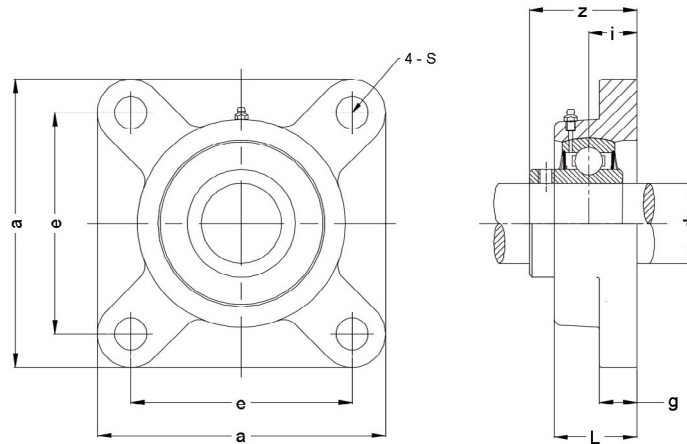
- Standard: SUC stainless insert
- Shaft sizes 55 - 75mm available to special order in OEM quantities - ask for details
- Optional: Closed end cover (part code SCC - shaft size) or Through shaft cover (part code SCO-shaft size)

- Interchangeable with cast iron units
- Working temp range -35 to +120 C
- Solid base to prevent dirt & bacterial build up
- FDA & FSDA approved



# SSUCF 200 SB Series

Stainless square flange block housing with SUC insert

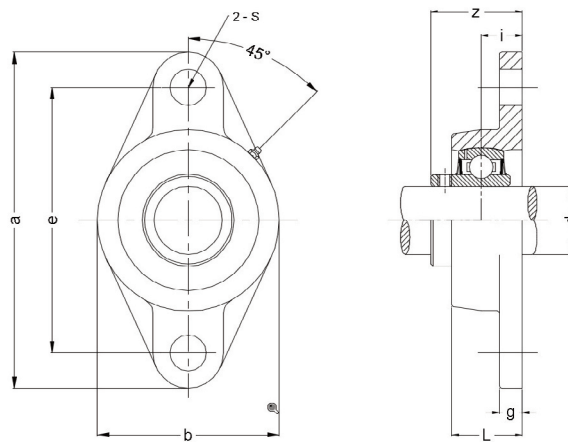


QCB reference	Insert bore		Dimensions								Bolt size	Weight kg
			a	e	g	L	s	z	i			
	mm	inch	mm	mm	mm	mm	mm	mm	mm			
SSUCF 201 SB	12	1/2	86	63.5	13.4	27.8	11	36.3	18	M10	0.12	
SSUCF 202 SB	15	9/16 ; 5/8	86	63.5	13.4	27.8	11	36.3	18	M10	0.12	
SSUCF 203 SB	17	11/16	86	63.5	13.4	27.8	11	36.3	18	M10	0.12	
SSUCF 204 SB	20	3/4	86	63.5	13.4	27.8	11	36.3	18	M10	0.12	
SSUCF 205 SB	25	13/16 ; 7/8 ; 15/16 ; 1	95	70	14	28	11	36.7	17	M10	0.15	
SSUCF 206 SB	30	1.1/16 ; 1.1/8 ; 1.3/16 ; 1.1/4	107	83	14.3	31.5	11	41.4	19.2	M12	0.18	
SSUCF 207 SB	35	1.1/4 ; 1.5/16 ; 1.3/8 ; 1.7/16	118	92	15.5	34.8	13	46.9	21.5	M12	0.26	
SSUCF 208 SB	40	1.1/2 ; 1.9/16	130	102	17	37.5	14	53.2	23	M12	0.33	
SSUCF 209 SB	45	1.5/8 ; 1.11/16 ; 1.3/4	137	105	19	41	17	54.2	24	M16	0.42	
SSUCF 210 SB	50	1.13/16 ; 1.7/8 ; 1.15/16 ; 2	143	111	21	43	17	57.6	25	M16	0.51	



# SSUCFL 200 SB Series

Stainless 2-bolt flange housing with SUC insert

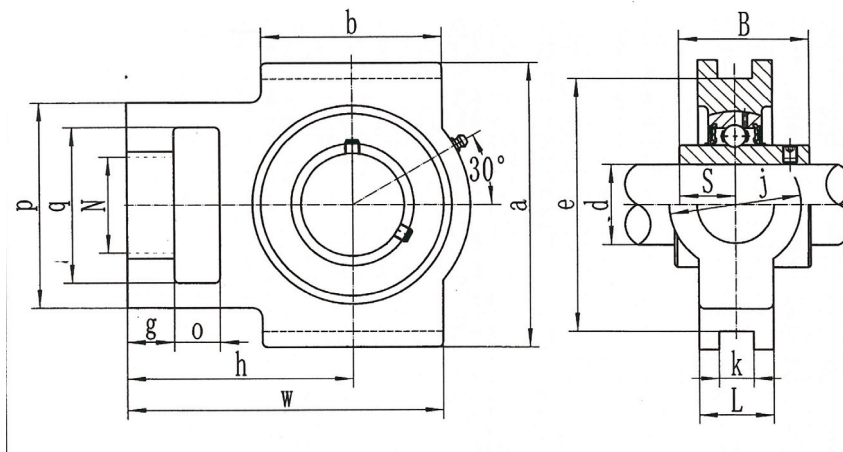


QCB reference	Insert bore		Dimensions								Bolt size	Weight kg
			a	e	b	g	L	s	z	i		
	mm	inch	mm	mm	mm	mm	mm	mm	mm	mm		
SSUCFL 201 SB	12	1/2	113	90	65	11.4	26.5	11	33.7	15.4	M10	0.08
SSUCFL 202 SB	15	9/16 ; 5/8	113	90	65	11.4	26.5	11	33.7	15.4	M10	0.08
SSUCFL 203 SB	17	11/16	113	90	65	11.4	26.5	11	33.7	15.4	M10	0.08
SSUCFL 204 SB	20	3/4	113	90	65	11.4	26.5	11	33.7	15.4	M10	0.08
SSUCFL 205 SB	25	13/16 ; 7/8 ; 15/16 ; 1	131	99	69.5	13.5	29.1	11	36.7	17	M10	0.10
SSUCFL 206 SB	30	1.1/16 ; 1.1/8 ; 1.3/16 ; 1.1/4	148	117	80	13.3	30.5	11	41.2	19	M12	0.13
SSUCFL 207 SB	35	1.1/4 ; 1.5/16 ; 1.3/8 ; 1.7/16	164	130	90	16.1	32.8	13	43.4	18	M12	0.16
SSUCFL 208 SB	40	1.1/2 ; 1.9/16	176	144	100	20	37.5	14	51.7	21.5	M12	0.24
SSUCFL 209 SB	45	1.5/8 ; 1.11/16 ; 1.3/4	188.5	148.5	108	21	41	17	54.2	24	M16	0.32
SSUCFL 210 SB	50	1.13/16 ; 1.7/8 ; 1.15/16 ; 2	197	157	115	21	43	17	57.6	25	M16	0.42



# SSUCT 200 SB Series

Stainless take-up housing with SUC insert

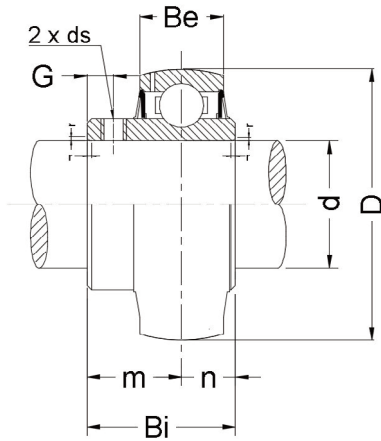


QCB reference	Insert bore		Dimensions								Bolt size (s)	Weight (kg)
	mm	inch	a	h	w	c	m	t	v	d		
SSUCT 201	12	1/2	99	64	47	27.5	65	36	89	12	M16	0.38
SSUCT 202	15	9/16 ; 5/8	99	64	47	27.5	65	36	89	12	M16	0.37
SSUCT 203	17	11/16	99	64	47	27.5	65	36	89	12	M16	0.36
SSUCT 204	20	3/4	99	64	47	27.5	65	36	89	12	M16	0.35
SSUCT 205	25	13/16 ; 7/8 ; 15/16 ; 1	99	64	47	27.5	74	36	89	12	M16	0.36
SSUCT 206	30	1.1/16 ; 1.1/8 ; 1.3/16 ; 1.1/4	125	76	63	34.5	90	40	102.5	12	M16	0.65
SSUCT 207	35	1.1/4 ; 1.5/16 ; 1.3/8 ; 1.7/16	125	76	63	34.5	90	40	102.5	12	M16	0.80
SSUCT 208	40	1.1/2 ; 1.9/16	140	85	80	33.5	100	40	113	16	M16	0.95
SSUCT 209	45	1.5/8 ; 1.11/16 ; 1.3/4	149	90	85	38	110	50	117	16	M20	1.00
SSUCT 210	50	1.13/16 ; 1.7/8 ; 1.15/16 ; 2	149	90	85	38	110	50	117	16	M20	1.10



# SUC 200 Inserts

QCB standard insert; AISI 440 C Stainless



QCB reference	Insert bore		Dimensions								Weight	Load ratings	
			D	Bi	Be	r	n	m	G	ds		C	Co
	mm	inch	mm	mm	mm	mm	mm	mm	mm	mm	kg	KN	KN
SUC201-08		1/2	47	31	17	1.5	12.7	18.3	5	M6 X 0.75	0.21	10	6.3
SUC201	12		47	31	17	1.5	12.7	18.3	5		0.21	10	6.3
SUC202-09		9/16	47	31	17	1.5	12.7	18.3	5		0.2	10	6.3
SUC202	15		47	31	17	1.5	12.7	18.3	5		0.2	10	6.3
SUC202-10		5/8	47	31	17	1.5	12.7	18.3	5		0.2	10	6.3
SUC203	17		47	31	17	1.5	12.7	18.3	5		0.18	10	6.3
SUC203-11		11/16	47	31	17	1.5	12.7	18.3	5		0.18	10	6.3
SUC204-12		3/4	47	31	17	1.5	12.7	18.3	5		0.17	10	6.3
SUC204	20		47	31	17	1.5	12.7	18.3	5		0.17	10	6.3
SUC205-13		13/16	52	34.1	17	1.5	14.3	19.8	5		0.23	11	7.1
SUC205-14		7/8	52	34.1	17	1.5	14.3	19.8	5		0.23	11	7.1
SUC205-15		15/16	52	34.1	17	1.5	14.3	19.8	5		0.23	11	7.1
SUC205	25		52	34.1	17	1.5	14.3	19.8	5		0.23	11	7.1
SUC205-16		1	52	34.1	17	1.5	14.3	19.8	5		0.23	11	7.1
SUC206-17		1.1/16	62	38.1	19	1.5	15.9	22.2	5		0.34	15.2	10.2
SUC206-18		1.1/8	62	38.1	19	1.5	15.9	22.2	5		0.34	15.2	10.2
SUC206-19		1.3/16	62	38.1	19	1.5	15.9	22.2	5		0.34	15.2	10.2
SUC206	30		62	38.1	19	1.5	15.9	22.2	5		0.34	15.2	10.2
SUC206-20		1.1/4	62	38.1	19	1.5	15.9	22.2	5		0.34	15.2	10.2
SUC207-20		1.1/4	72	42.9	20	1.5	17.5	25.4	7		0.5	20.1	13.9
SUC207-21		1.5/16	72	42.9	20	1.5	17.5	25.4	7	0.5	20.1	13.9	
SUC207-22		1.3/8	72	42.9	20	1.5	17.5	25.4	7	0.5	20.1	13.9	
SUC207	35		72	42.9	20	1.5	17.5	25.4	7	0.5	20.1	13.9	
SUC207-23		1.7/16	72	42.9	20	1.5	17.5	25.4	7	0.5	20.1	13.9	
SUC208-24		1.1/2	80	49.2	22	2	19	30.2	8	M8 X 1	0.66	23	16
SUC208-25		1.9/16	80	49.2	22	2	19	30.2	8		0.66	23	16
SUC208	40		80	49.2	22	2	19	30.2	8		0.66	23	16
SUC209-26		1.5/8	85	49.2	22	2	19	30.2	8		0.78	25.6	18.1
SUC209-27		1.11/16	85	49.2	22	2	19	30.2	8		0.78	25.6	18.1
SUC209-28		1.3/4	85	49.2	22	2	19	30.2	8		0.78	25.6	18.1
SUC209	45		85	49.2	22	2	19	30.2	8		0.78	25.6	18.1
SUC210-29		1.13/16	90	51.6	24	2	19	32.6	10		M10 X 1.25	0.91	27.5
SUC210-30		1.7/8	90	51.6	24	2	19	32.6	10	0.91		27.5	20.2
SUC210-31		1.15/16	90	51.6	24	2	19	32.6	10	0.91		27.5	20.2
SUC210	50		90	51.6	24	2	19	32.6	10	0.91		27.5	20.2
SUC210-32		2	90	51.6	24	2	19	32.6	10	0.91		27.5	20.2

# QCB Stainless Technical

## Materials

QCB Stainless steel bearing housings are cast in AISI 304 and have a solid base to eliminate area where bacteria can hide or mould can develop.



## End caps

- Open and closed type end caps sold separately
- End covers offer additional protection to the bearing insert by keeping contaminants out, and lubricant in.
- Operating temperature range -30 to +120C
- FDA approved
- Simple snap-on fitting
- Part ref Close SCC- or SCO-

## Setscrew tightening torque

The 2 setscrews should be tightened to the appropriate torque figures tabulated. Overtightening may result in cracks developing in the inner ring. If a high axial load is to be accommodated, a small dimple in the shaft may improve the locking effect.

Insert size	Grubscrew size	Torque
		Nm
201 - 206	M6	3.83
207 - 209	M8	9
210 - 212	M10	18

## Limiting speeds

The limiting speed of any bearing insert is determined by the quality of fit between shaft and inner ring.

Insert size	Shaft tolerance			
	j7	h7	h8	h9
201	6700	5300	3800	1400
202	6700	5300	3800	1400
203	6700	5300	3800	1400
204	6000	4800	3400	1200
205	5600	4000	3000	1000
206	4500	3400	2400	850
207	4000	3000	2000	750
208	3600	2600	1900	670
209	3200	2400	1700	600
210	3000	2200	1600	560
211	2600	2000	1400	500
212	2400	1800	1200	450
213	2200	1700	1100	430
214	2200	1600	1100	400
215	2000	1500	1000	380

## Stainless numbering system

SS	UCF	204	SB	SCO	
SS	Stainless steel				
UCF	Basic bearing style				
204	Insert size				
SB	Solid base (if applicable)				
SCO	Cover style (if applicable)				



QCB THERMOPLASTIC BEARINGS are exclusively distributed by

NBC Group Ltd  
Unit D, Stafford Park 18, Telford, TF3 3BN, England  
T: +44 (0)1952 222300 E: [telford@nbcgroup.co.uk](mailto:telford@nbcgroup.co.uk)

NBC Belfast  
20 Ravenhill Road, Belfast, BT6 8EA  
T: +44 (0)2890 732321 E: [belfast@nbcgroup.co.uk](mailto:belfast@nbcgroup.co.uk)



[www.nbcgroup.co.uk](http://www.nbcgroup.co.uk)