



THERMOPLASTIC BEARINGS



QCB's core values...



Warranty

QCB Thermoplastic bearings are guaranteed for 12 months after delivery to be free from material defect and manufacturing or assembly error. Any perceived faults should be documented and reported to QCB.

Limitation of Liability

The information in this manual is distilled from best practices, national standards and our own extensive experience.

QCB assumes no liability for damages arising from

- Improper selection of product by the customer
- Failure to follow the instructions and information in this manual
- Improper use of the product
- The use of untrained personnel
- Any modifications to the product as delivered

Cat TP 2025-1E Revision 1

In the interests of continuous product improvement, QCB reserves the right to modify any product or specification. All weights and measures are approximate and for guidance only.

Detailed & up to date information is available from the QCB Technical Department or www.QCBThermoplastic.com

Any reproduction or unauthorised use of this material is strictly prohibited.

An extensive product range...

QCB® bearing housings are made of PBT high-grade glass-filled thermoplastic polyester and are completely interchangeable with conventional cast-iron housings, resulting in a maintenance free housing with excellent mechanical strength, stiffness and dimensional stability in a housing that will never rust or corrode.

Developed for use where high standards of cleanliness are important or a significant amount of liquid is present such as in the food and beverage industries, the smooth housing surfaces are much more hygienic than equivalent cast-iron units whose rough surfaces can harbour objectionable dirt, mould and bacteria.

NO PLATING OR COATING TO CHIP OR PEEL

Coated or plated cast-iron housings can scratch, chip and peel. The very act of installation can damage the finish to be removed around the edges of the bolts. Because QCB® Thermoplastic housings are solid PBT, coatings are not required for protection. And even if they are scratched or chipped there is no vulnerable cast-iron to be exposed.

QCB® THERMOPLASTIC HOUSINGS ARE DURABLE

With a tensile strength of 17 300 psi, and the ability to be pressure washed with hot water, QCB® Thermoplastic housings will stand up in the toughest applications.

ALL OTHER PARTS STAINLESS STEEL

To maximise corrosion resistance, not only is the bearing completely stainless, but so are the bolt inserts and grease nipples (suffix -N). Inserts are filled with a high-quality (FDA Approved) food-grade grease (suffix -6)

USED IN MANY INDUSTRIES

Because of their corrosion resistant and non-magnetic properties, QCB® Thermoplastic housings find application in a wide variety of industries including food processing; canning; bottling; pharmaceutical; chemical processing and other general industrial applications.

A COMPLETE RANGE

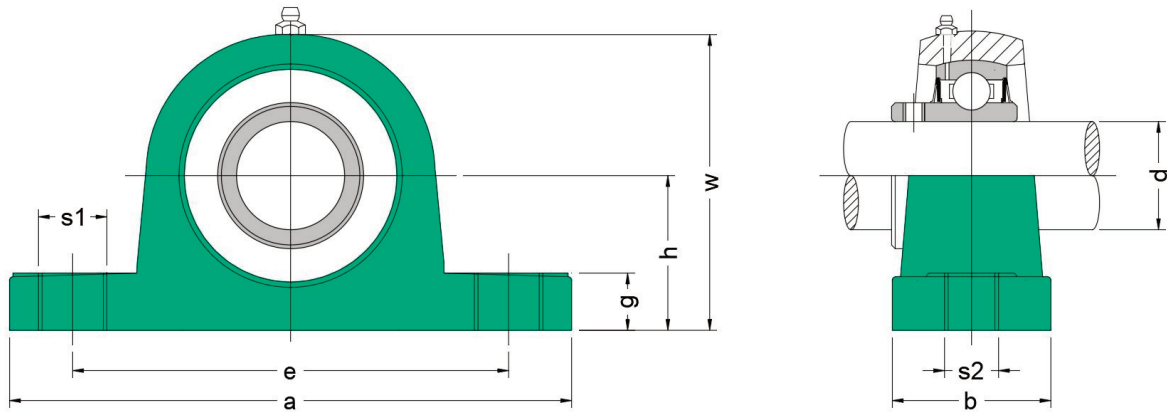
QCB® Thermoplastic bearings are available in a wide range of styles, colours and sizes, with inch, metric or even plastic inserts. Snap-on closed-end covers are supplied as standard with through-shaft style and back seals available as optional extra (where applicable).

QCB... TURNING YOUR WORLD



PPL 200 Series

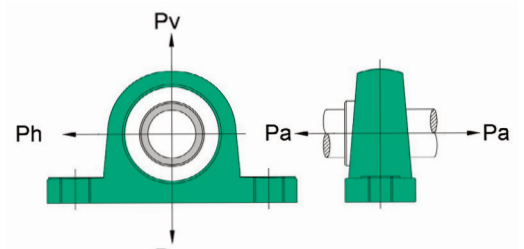
PBT Pillow block housing with SUC insert and closed cover (standard)



QCB reference	Insert bore (d)		Dimensions								Bolt size	Weight kg
			h	a	e	w	b	g	s1	s2		
	mm	inch	mm	mm	mm	mm	mm	mm	mm	mm		
PPL 201 SS N6	12	1/2	33.3	127	95	65.5	38	14.2	14	11	M10	0.12
PPL 202 SS N6	15	9/16 ; 5/8	33.3	127	95	65.5	38	14.2	14	11	M10	0.12
PPL 203 SS N6	17	11/16	33.3	127	95	65.5	38	14.2	14	11	M10	0.12
PPL 204 SS N6	20	3/4	33.3	127	95	65.5	38	14.2	14	11	M10	0.12
PPL 205 SS N6	25	13/16 ; 7/8 ; 15/16 ; 1	36.5	140.5	105	71	38	14.5	14	11	M10	0.14
PPL 206 SS N6	30	1.1/16 ; 1.1/8 ; 1.3/16 ; 1.1/4	42.9	163	119	84	46	17.8	18	14	M12	0.20
PPL 207 SS N6	35	1.1/4 ; 1.5/16 ; 1.3/8 ; 1.7/16	47.6	168	127	94.5	48	18	18	14	M12	0.25
PPL 208 SS N6	40	1.1/2 ; 1.9/16	49.2	184	137	99	54	19.5	18	14	M12	0.36
PPL 209 SS N6	45	1.5/8 ; 1.11/16 ; 1.3/4	54	192	146	106	54	23	20	17	M16	0.45
PPL 210 SS N6	50	1.13/16 ; 1.7/8 ; 1.15/16 ; 2	57.2	206	159	114	60	23	20	17	M16	0.55

- Supplied standard with SUC insert and closed cover.
- Can be supplied with SSB flat-back insert, additional back seals and open/ through shaft cover
- See technical section for ordering details

Load direction	Housing strength (N)						
	204	205	206	207	208	209	210
Ph	8800	137000	12650	12750	13100	13360	13850
Pv	7700	10000	10600	10800	11100	11400	11750
Pa	5000	8100	5750	7500	8500	8950	9550

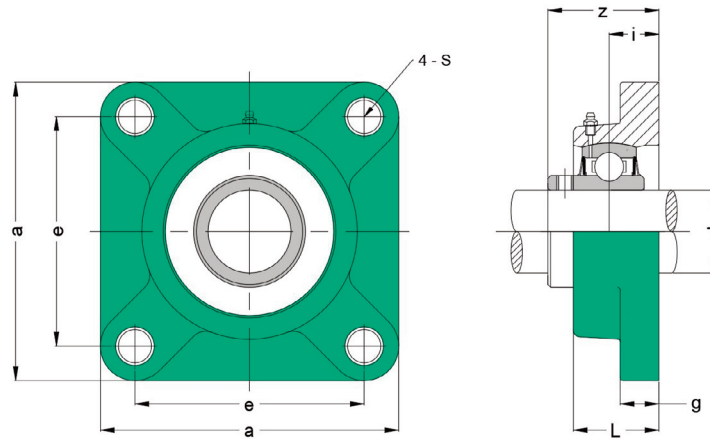


- Interchangeable with cast iron units
- Working temp range -35 to +102 C with excellent dimension stability
- 304 Stainless steel bolt inserts and grease nipples
- Solid base to prevent dirt & bacterial build up
- FDA & FSDA approved



FPL 200 Series

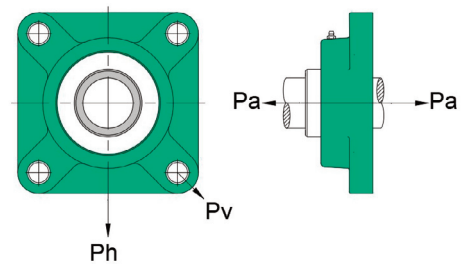
PBT Pillow block housing



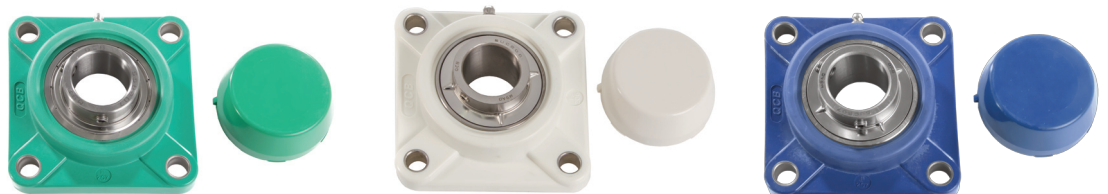
QCB reference	Insert bore (d)		Dimensions								Bolt size	Weight kg
	mm	inch	a mm	e mm	g mm	L mm	z mm	i mm	s mm			
FPL 201 SS N6	12	1/2	87	63.5	13.4	27.8	36.3	18	11		M10	0.32
FPL 202 SS N6	15	9/16 ; 5/8	87	63.5	13.4	27.8	36.3	18	11		M10	0.31
FPL 203 SS N6	17	11/16	87	63.5	13.4	27.8	36.3	18	11		M10	0.30
FPL 204 SS N6	20	3/4	87	63.5	13.4	27.8	36.3	18	11		M10	0.29
FPL 205 SS N6	25	13/16 ; 7/8 ; 15/16 ; 1	95	70	14.3	28	36.7	17	11		M10	0.36
FPL 206 SS N6	30	1.1/16 ; 1.1/8 ; 1.3/16 ; 1.1/4	107	83	14.3	31.5	41.4	19.2	11		M12	0.50
FPL 207 SS N6	35	1.1/4 ; 1.5/16 ; 1.3/8 ; 1.7/16	118	92	15.5	34.8	46.9	21.5	13		M12	0.74
FPL 208 SS N6	40	1.1/2 ; 1.9/16	130	102	17	37.5	53.2	23	14		M12	0.97
FPL 209 SS N6	45	1.5/8 ; 1.11/16 ; 1.3/4	137	105	19	41	54.2	24	17		M16	1.10
FPL 210 SS N6	50	1.13/16 ; 1.7/8 ; 1.15/16 ; 2	143	111	21	43	57.2	25	17		M16	1.25

- Supplied standard with SUC insert and closed cover.
- Can be supplied with SSB flat-back insert, additional back seals and open/ through shaft cover
- See technical section for ordering details

Load direction	Housing strength (N)						
	204	205	206	207	208	209	210
Ph	15950	13000	18000	18500	19100	19350	19650
Pv	10250	12150	17700	18500	19250	19350	19620
Pa	3650	3350	3350	3520	3790	3850	3990

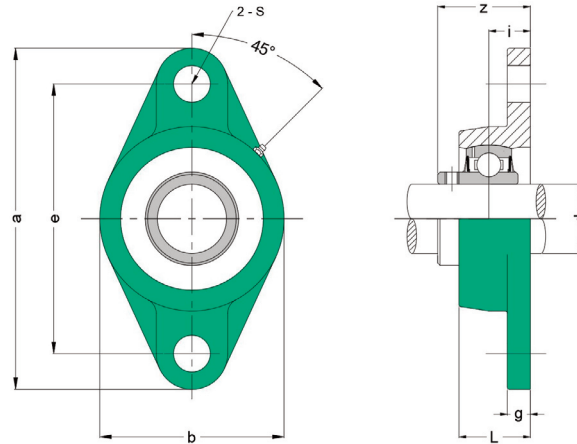


- Interchangeable with cast iron units
- Working temp range -35 to +102 C with excellent dimension stability
- 304 Stainless steel bolt inserts and grease nipples
- Solid base to prevent dirt & bacterial build up
- FDA & FSDA approved



NFL 200 Series

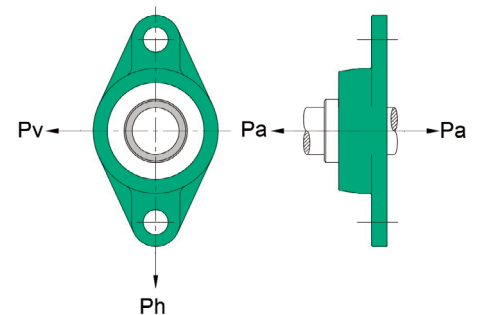
PBT 2-bolt oval flange housing



QCB reference	Insert bore (d)		Dimensions								Bolt size	Weight kg
	mm	inch	a	e	b	g	L	z	i	s		
NFL 201 SS N6	12	1/2	113	90	65	11.4	26.5	33.7	15.4	11	M10	0.08
NFL 202 SS N6	15	9/16 ; 5/8	113	90	65	11.4	26.5	33.7	15.4	11	M10	0.08
NFL 203 SS N6	17	11/16	113	90	65	11.4	26.5	33.7	15.4	11	M10	0.08
NFL 204 SS N6	20	3/4	113	90	65	11.4	26.5	33.7	15.4	11	M10	0.08
NFL 205 SS N6	25	13/16 ; 7/8 ; 15/16 ; 1	131	99	69.5	13.5	29.1	36.7	17	11	M10	0.10
NFL 206 SS N6	30	1.1/16 ; 1.1/8 ; 1.3/16 ; 1.1/4	148	117	80	13.3	30.5	41.2	19	11	M12	0.13
NFL 207 SS N6	35	1.1/4 ; 1.5/16 ; 1.3/8 ; 1.7/16	164	130	90	16.1	32.8	43.4	18	13	M12	0.16
NFL 208 SS N6	40	1.1/2 ; 1.9/16	176	144	100	20	37.5	51.7	21.5	14	M12	0.24
NFL 209 SS N6	45	1.5/8 ; 1.11/16 ; 1.3/4	188.5	148.5	108	21	41	54.2	24	17	M16	0.32
NFL 210 SS N6	50	1.13/16 ; 1.7/8 ; 1.15/16 ; 2	197	157	115	21	43	57.6	25	17	M16	0.42

- Supplied standard with SUC insert and closed cover.
- Can be supplied with SSB flat-back insert, additional back seals and open/ through shaft cover
- See technical section for ordering details

Load direction	Housing strength (N)						
	204	205	206	207	208	209	210
Ph	11750	11375	16450	16900	17350	17600	17950
Pv	11000	13850	13350	13950	14050	14300	14550
Pa	8500	11100	14200	14900	14900	15150	15650

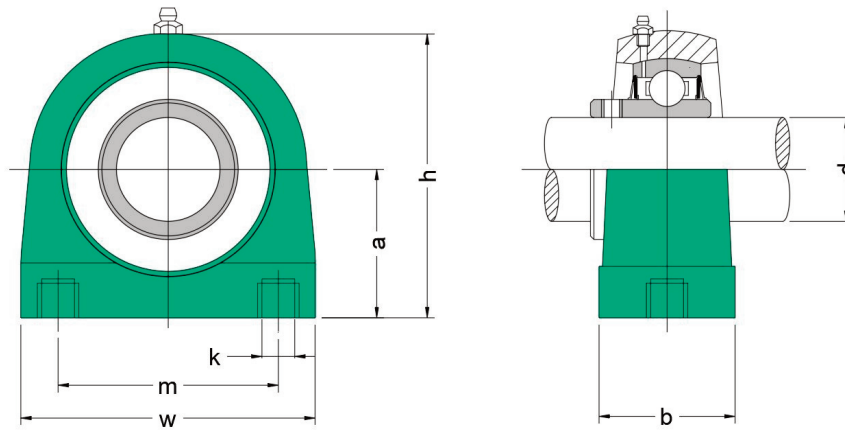


- Interchangeable with cast iron units
- Working temp range -35 to +102 C with excellent dimension stability
- 304 Stainless steel bolt inserts and grease nipples
- Solid base to prevent dirt & bacterial build up
- FDA & FSDA approved



UCPL 200 Series

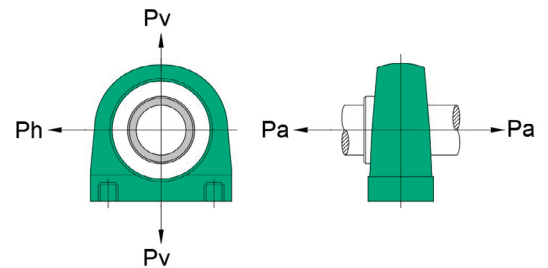
PBT Short base pillow block housing



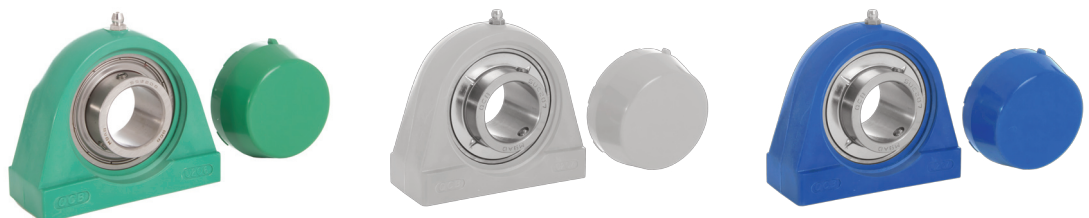
QCB reference	Insert bore (d)		Dimensions							Bolt size (k)	Weight (kg)	
			a	h	w	m	b					
	mm	inch	mm	mm	mm	mm	mm					
UCPL 201 SS N6	12	1/2	33.3	66	72.8	50.8	34.5				M8	0.30
UCPL 202 SS N6	15	9/16 ; 5/8	33.3	66	72.8	50.8	34.5				M8	0.29
UCPL 203 SS N6	17	11/16	33.3	66	72.8	50.8	34.5				M8	0.28
UCPL 204 SS N6	20	3/4	33.3	66	72.8	50.8	34.5				M8	0.26
UCPL 205 SS N6	25	13/16 ; 7/8 ; 15/16 ; 1	36.5	73.5	76.2	50.8	39.5				M10	0.33
UCPL 206 SS N6	30	1.1/16 ; 1.1/8 ; 1.3/16 ; 1.1/4	42.9	84	101	76.2	42.5				M10	0.49
UCPL 207 SS N6	35	1.1/4 ; 1.5/16 ; 1.3/8 ; 1.7/16	47.6	95	110	82.6	47.5				M10	0.80
UCPL 208 SS N6	40	1.1/2 ; 1.9/16	49.2	100.5	120	88.9	48.0				M12	0.95
UCPL 209 SS N6	45	1.5/8 ; 1.11/16 ; 1.3/4	54.0	108.5	124	95.3	50.0				M12	1.10
UCPL 210 SS N6	50	1.13/16 ; 1.7/8 ; 1.15/16 ; 2	57.2	115	135	101.6	54.0				M16	1.25

- Supplied standard with SUC insert and closed cover.
- Can be supplied with SSB flat-back insert, additional back seals and open/ through shaft cover
- See technical section for ordering details

Load direction	Housing strength (N)						
	204	205	206	207	208	209	210
Ph	8210	8540	10370	12150	12230	12900	13850
Pv	6900	7010	6580	8080	9100	10400	11050
Pa	2980	2850	4950	8160	9800	10710	11360

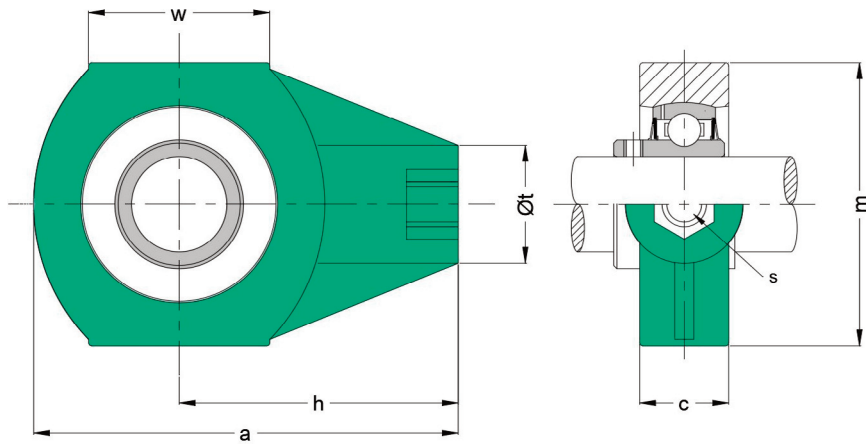


- Interchangeable with cast iron units
- Working temp range -35 to +102 C with excellent dimension stability
- 304 Stainless steel bolt inserts and grease nipples
- Solid base to prevent dirt & bacterial build up
- FDA & FSDA approved



HPL 200 Series

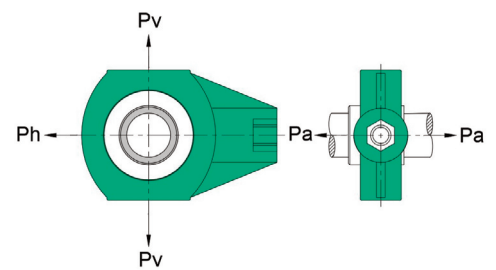
PBT Hanger unit



QCB reference	Insert bore		Dimensions							Bolt size (s)	Weight (kg)
	mm	inch	a (mm)	h (mm)	w (mm)	c (mm)	m (mm)	Øt (mm)			
HPL 201 SS N6	12	1/2	99	64	47	27.5	65	36		M16	0.38
HPL 202 SS N6	15	9/16 ; 5/8	99	64	47	27.5	65	36		M16	0.37
HPL 203 SS N6	17	11/16	99	64	47	27.5	65	36		M16	0.36
HPL 204 SS N6	20	3/4	99	64	47	27.5	65	36		M16	0.35
HPL 205 SS N6	25	13/16 ; 7/8 ; 15/16 ; 1	99	64	47	27.5	74	36		M16	0.34
HPL 206 SS N6	30	1.1/16 ; 1.1/8 ; 1.3/16 ; 1.1/4	125	76	63	34.5	90	40		M16	0.55
HPL 207 SS N6	35	1.1/4 ; 1.5/16 ; 1.3/8 ; 1.7/16	125	76	63	34.5	90	40		M16	0.80
HPL 208 SS N6	40	1.1/2 ; 1.9/16	140	85	80	33.5	100	40		M16	0.90
HPL 209 SS N6	45	1.5/8 ; 1.11/16 ; 1.3/4	149	90	85	38	110	50		M20	1.10
HPL 210 SS N6	50	1.13/16 ; 1.7/8 ; 1.15/16 ; 2	149	90	85	38	110	50		M20	1.20

- Supplied standard with SUC insert and closed cover.
- Can be supplied with SSB flat-back insert, additional back seals and open/ through shaft cover
- See technical section for ordering details

Load direction	Housing strength (N)						
	204	205	206	207	208	209	210
Ph	14800	15500	15800	16500	17300	18210	18860
Pv	3930	4530	5100	6500	7800	8710	9750
Pa	8500	10350	10900	11300	12150	12900	13550

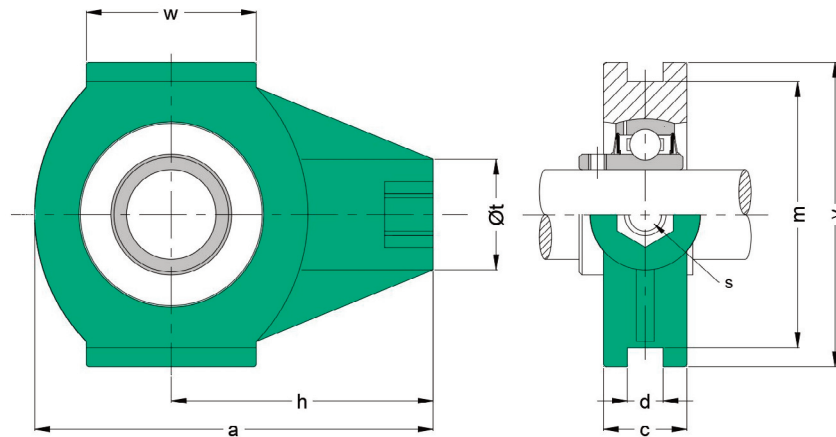


- Interchangeable with cast iron units
- Working temp range -35 to +102 C with excellent dimension stability
- 304 Stainless steel bolt inserts and grease nipples
- Solid base to prevent dirt & bacterial build up
- FDA & FSDA approved



TPL 200 Series

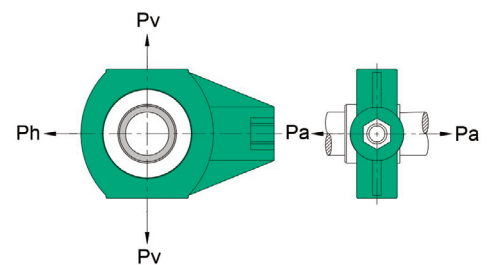
PBT Take-up housing



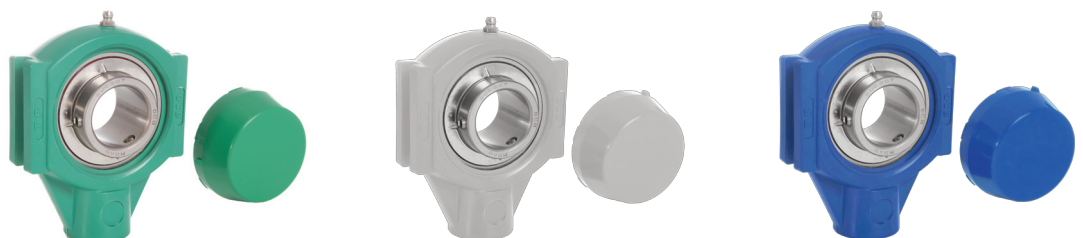
QCB reference	Insert bore		Dimensions								Bolt size (s)	Weight kg
	mm	inch	a	h	w	c	m	ϕt	v	d		
TPL 201 SS N6	12	1/2	99	64	47	27.5	65	36	89	12	M16	0.38
TPL 202 SS N6	15	9/16 ; 5/8	99	64	47	27.5	65	36	89	12	M16	0.37
TPL 203 SS N6	17	11/16	99	64	47	27.5	65	36	89	12	M16	0.36
TPL 204 SS N6	20	3/4	99	64	47	27.5	65	36	89	12	M16	0.35
TPL 205 SS N6	25	13/16 ; 7/8 ; 15/16 ; 1	99	64	47	27.5	74	36	89	12	M16	0.36
TPL 206 SS N6	30	1.1/16 ; 1.1/8 ; 1.3/16 ; 1.1/4	125	76	63	34.5	90	40	102.5	12	M16	0.65
TPL 207 SS N6	35	1.1/4 ; 1.5/16 ; 1.3/8 ; 1.7/16	125	76	63	34.5	90	40	102.5	12	M16	0.80
TPL 208 SS N6	40	1.1/2 ; 1.9/16	140	85	80	33.5	100	40	113	16	M16	0.95
TPL 209 SS N6	45	1.5/8 ; 1.11/16 ; 1.3/4	149	90	85	38	110	50	117	16	M20	1.00
TPL 210 SS N6	50	1.13/16 ; 1.7/8 ; 1.15/16 ; 2	149	90	85	38	110	50	117	16	M20	1.10

- Supplied standard with SUC insert and closed cover.
- Can be supplied with SSB flat-back insert, additional back seals and open/ through shaft cover
- See technical section for ordering details

Load direction	Housing strength (N)						
	204	205	206	207	208	209	210
Ph	14800	15500	15800	16500	17300	18210	18860
Pv	3930	4530	5100	6500	7800	8710	9750
Pa	8500	10350	10900	11300	12150	12900	13550

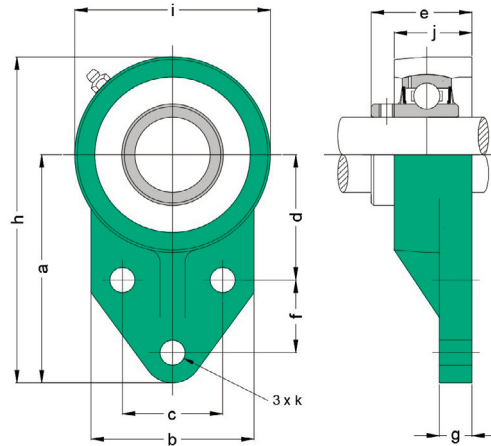


- Interchangeable with cast iron units
- Working temp range -35 to +102 C with excellent dimension stability
- 304 Stainless steel bolt inserts and grease nipples
- Solid base to prevent dirt & bacterial build up
- FDA & FSDA approved



FBL 200 Series

PBT Flange bracket housing



QCB reference	Insert bore		Dimensions										Bolt size	Weight kg
			a	h	d	f	i	j	c	b	g	k		
	mm	inch	mm	mm	mm	mm	mm	mm	mm	mm	mm	mm		
FBL 201 SS N6	12	1/2	76.2	108	42.9	22.2	63.5	26.5	38.1	62	11.4	10.7	M10	0.28
FBL 202 SS N6	15	9/16 ; 5/8	76.2	108	42.9	22.2	63.5	26.5	38.1	62	11.4	10.7	M10	0.26
FBL 203 SS N6	17	11/16	76.2	108	42.9	22.2	63.5	26.5	38.1	62	11.4	10.7	M10	0.25
FBL 204 SS N6	20	3/4	76.2	108	42.9	22.2	63.5	26.5	38.1	62	11.4	10.7	M10	0.25
FBL 205 SS N6	25	13/16 ; 7/8 ; 15/16 ; 1	85.7	120.6	46	28.6	70	34	41.3	63.5	11.4	10.7	M10	0.30
FBL 206 SS N6	30	1.1/16 ; 1.1/8 ; 1.3/16 ; 1.1/4	96.5	138.5	52.4	31.8	83	32	47.6	76	13.3	10.7	M10	0.46
FBL 207 SS N6	35	1.1/4 ; 1.5/16 ; 1.3/8 ; 1.7/16	109.5	157	60.3	31.8	95	36.5	50.8	89	16.1	13.1	M12	0.66
FBL 208 SS N6	40	1.1/2 ; 1.9/16	108.5	158.5	60	32	100	36	50.2	89	16.1	13.1	M12	0.85
FBL 210 SS N6	50	1.13/16 ; 1.7/8 ; 1.15/16 ; 2	129.7	186.5	68	46	113	39	59	99.7	20.5	14.2	M14	1.10

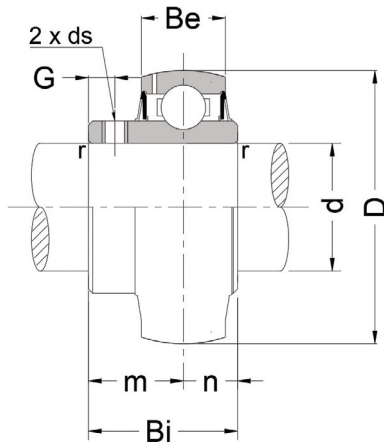
- Supplied standard with SUC insert and closed cover.
- Can be supplied with SSB flat-back insert, additional back seals and open/ through shaft cover
- See technical section for ordering details

- Interchangeable with cast iron units
- Working temp range -35 to +102 C with excellent dimension stability
- 304 Stainless steel bolt inserts and grease nipples
- Solid base to prevent dirt & bacterial build up
- FDA & FSDA approved



SUC 200 Inserts

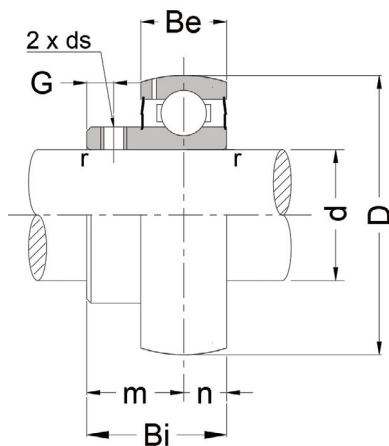
QCB standard insert; AISI 440 C Stainless



QCB reference	Insert bore		Dimensions								Weight kg	Load ratings	
			D	Bi	Be	r	n	m	G	ds		C KN	Co KN
	mm	inch	mm	mm	mm	mm	mm	mm	mm	mm			
SUC201-08		1/2	47	31	17	1.5	12.7	18.3	5	M6 X 0.75	0.21	10	6.3
SUC201	12		47	31	17	1.5	12.7	18.3	5		0.21	10	6.3
SUC202-09		9/16	47	31	17	1.5	12.7	18.3	5		0.2	10	6.3
SUC202	15		47	31	17	1.5	12.7	18.3	5		0.2	10	6.3
SUC202-10		5/8	47	31	17	1.5	12.7	18.3	5		0.2	10	6.3
SUC203	17		47	31	17	1.5	12.7	18.3	5		0.18	10	6.3
SUC203-11		11/16	47	31	17	1.5	12.7	18.3	5		0.18	10	6.3
SUC204-12		3/4	47	31	17	1.5	12.7	18.3	5		0.17	10	6.3
SUC204	20		47	31	17	1.5	12.7	18.3	5		0.17	10	6.3
SUC205-13		13/16	52	34.1	17	1.5	14.3	19.8	5		0.23	11	7.1
SUC205-14		7/8	52	34.1	17	1.5	14.3	19.8	5		0.23	11	7.1
SUC205-15		15/16	52	34.1	17	1.5	14.3	19.8	5		0.23	11	7.1
SUC205	25		52	34.1	17	1.5	14.3	19.8	5		0.23	11	7.1
SUC205-16		1	52	34.1	17	1.5	14.3	19.8	5		0.23	11	7.1
SUC206-17		1.1/16	62	38.1	19	1.5	15.9	22.2	5		0.34	15.2	10.2
SUC206-18		1.1/8	62	38.1	19	1.5	15.9	22.2	5		0.34	15.2	10.2
SUC206-19		1.3/16	62	38.1	19	1.5	15.9	22.2	5		0.34	15.2	10.2
SUC206	30		62	38.1	19	1.5	15.9	22.2	5		0.34	15.2	10.2
SUC206-20		1.1/4	62	38.1	19	1.5	15.9	22.2	5		0.34	15.2	10.2
SUC207-20		1.1/4	72	42.9	20	1.5	17.5	25.4	7		0.5	20.1	13.9
SUC207-21		1.5/16	72	42.9	20	1.5	17.5	25.4	7	0.5	20.1	13.9	
SUC207-22		1.3/8	72	42.9	20	1.5	17.5	25.4	7	0.5	20.1	13.9	
SUC207	35		72	42.9	20	1.5	17.5	25.4	7	0.5	20.1	13.9	
SUC207-23		1.7/16	72	42.9	20	1.5	17.5	25.4	7	0.5	20.1	13.9	
SUC208-24		1.1/2	80	49.2	22	2	19	30.2	8	M8 X 1	0.66	23	16
SUC208-25		1.9/16	80	49.2	22	2	19	30.2	8		0.66	23	16
SUC208	40		80	49.2	22	2	19	30.2	8		0.66	23	16
SUC209-26		1.5/8	85	49.2	22	2	19	30.2	8		0.78	25.6	18.1
SUC209-27		1.11/16	85	49.2	22	2	19	30.2	8		0.78	25.6	18.1
SUC209-28		1.3/4	85	49.2	22	2	19	30.2	8		0.78	25.6	18.1
SUC209	45		85	49.2	22	2	19	30.2	8		0.78	25.6	18.1
SUC210-29		1.13/16	90	51.6	24	2	19	32.6	10		M10 X 1.25	0.91	27.5
SUC210-30		1.7/8	90	51.6	24	2	19	32.6	10	0.91		27.5	20.2
SUC210-31		1.15/16	90	51.6	24	2	19	32.6	10	0.91		27.5	20.2
SUC210	50		90	51.6	24	2	19	32.6	10	0.91		27.5	20.2
SUC210-32		2	90	51.6	24	2	19	32.6	10	0.91		27.5	20.2

SSB 200 inserts

QCB Flatback insert; AISI 440 C Stainless



QCB reference	Insert bore		Dimensions								Weight kg	Load ratings	
			D	Bi	Be	r	n	m	G	ds		C KN	Co KN
	mm	inch	mm	mm	mm	mm	mm	mm	mm	mm			
SSB201-08		1/2	47	22	12	1	6	16	4	M6 X 0.75	0.10	7.5	4.54
SSB201	12		47	22	12	1	6	16	4		0.09	7.5	4.54
SSB202-09		9/16	47	22	12	1	6	16	4		0.08	7.5	4.54
SSB202	15		47	22	12	1	6	16	4		0.08	7.5	4.54
SSB202-10		5/8	47	22	12	1	6	16	4		0.08	7.5	4.54
SSB203	17		47	22	12	1	6	16	4		0.08	7.5	4.54
SSB203-11		11/16	47	22	12	1	6	16	4		0.08	7.5	4.54
SSB204-12		3/4	47	25	14	1.5	7	18	4		0.13	10	6.3
SSB204	20		47	25	14	1.5	7	18	5		0.13	10	6.3
SSB205-14		7/8	52	27	15	1.5	7.5	19.5	5		0.18	11	7.1
SSB205-15		15/16	52	27	15	1.5	7.5	19.5	5		0.17	11	7.1
SSB205	25		52	27	15	1.5	7.5	19.5	5		0.16	11	7.1
SSB205-16		1	52	27	15	1.5	7.5	19.5	5		0.16	11	7.1
SSB206-18		1.1/8	62	30	16	1.5	8	22	6		0.26	15.2	10.2
SSB206-19		1.3/16	62	30	16	1.5	8	22	6		0.26	15.2	10.2
SSB206	30		62	30	16	1.5	8	22	6		0.26	15.2	10.2
SSB206-20		1.1/4	62	30	16	1.5	8	22	6		0.26	15.2	10.2
SSB207-20		1.1/4	72	32	17	2	8.5	23.5	7		0.4	20.1	13.9
SSB207-21		1.5/16	72	32	17	2	8.5	23.5	7		0.4	20.1	13.9
SSB207-22		1.3/8	72	32	17	2	8.5	23.5	7		0.4	20.1	13.9
SSB207	35		72	32	17	2	8.5	23.5	7	0.4	20.1	13.9	
SSB207-23		1.7/16	72	32	17	2	8.5	23.5	7	0.4	20.1	13.9	
SSB208-24		1.1/2	80	34	18	2	9	25	8	M8 X 1	0.68	238	16
SSB208-25		1.9/16	80	34	18	2	9	25	8		0.6	23	16
SSB208	40		80	34	18	2	9	25	8		0.6	23	16
SSB209-26		1.5/8	85	41.2	19	2	10.2	31	9		0.8	25.6	18.1
SSB209-27		1.11/16	85	41.2	19	2	10.2	31	9		0.8	25.6	18.1
SSB209-28		1.3/4	85	41.2	19	2	10.2	31	9		0.8	25.6	18.1
SSB209	45		85	41.2	19	2	10.2	31	9		0.8	25.6	18.1
SSB210-30		1.7/8	90	43.5	20	2	10.9	32.6	9		M10 X 1.25	0.95	27.5
SSB210-31		1.15/16	90	43.5	20	2	10.9	32.6	9	0.95		27.5	20.2
SSB210	50		90	43.5	20	2	10.9	32.6	9	0.95		27.5	20.2
SSB210-32		2	90	43.5	20	2	10.9	32.6	9	0.95		27.5	20.2

QCB Thermoplastic Technical

Thermoplastic numbering system

FPL	204	SS	N	6	A	GRN
-----	-----	----	---	---	---	-----

FPL	Basic bearing housing style
204	Basic bearing insert size
SS	Stainless steel insert
N	Stainless steel grease nipple
6	Food grade grease (standard)
A	Back seal (if applicable)
GRN	Housing colour GRN, WHT or BLU
BACK SEAL xxx	Back seal where xxx = insert size
xxx CLD GRN	Closed cover ; xxx = insert size; option WHT or BLU
xxx OPN GRN	Open cover ; xxx = insert size; option WHT or BLU

End covers (all colours)



- Closed type Polypropylene end covers sold with all units.
- End covers offer additional protection to the bearing insert by keeping contaminants out, and lubricant in.
- Open type with nitrile rubber seal and stainless steel spring allow through shaft access - sold separately.
- Operating temperature range -20 to +90C
- FDA approved
- Simple snap-on fitting, remove with a screwdriver

Back seals

- Additional seals can be fitted to the mounting side of the FPL, NFL, FPL, FBL housings if fitted with the SSB flat-back insert.
- Protects the rear of the bearing insert when mounted preventing contaminant ingress.

Insert size	Seal dimensions		
	d	D	b
	mm	mm	mm
204	20	52	6
205	25	62	6
206	30	72	6
207	35	82	6
208	40	88	6
209	45	93	6
210	50	98	6



Setscrew tightening torque

The 2 setscrews should be tightened to the appropriate torque figures tabulated. Overtightening may result in cracks developing in the inner ring. If a high axial load is to be accommodated, a small dimple in the shaft may improve the locking effect, or mounting against a shoulder should be considered.

Insert size	Grubscrew size	Torque
		Nm
201 - 206	M6	3.83
207 - 209	M8	9
210 - 212	M10	18

Limiting speeds

The limiting speed of any bearing insert is determined by the quality of fit between shaft and inner ring.

Insert size	Shaft tolerance			
	j7	h7	h8	h9
201	6700	5300	3800	1400
202	6700	5300	3800	1400
203	6700	5300	3800	1400
204	6000	4800	3400	1200
205	5600	4000	3000	1000
206	4500	3400	2400	850
207	4000	3000	2000	750
208	3600	2600	1900	670
209	3200	2400	1700	600
210	3000	2200	1600	560
211	2600	2000	1400	500
212	2400	1800	1200	450
213	2200	1700	1100	430
214	2200	1600	1100	400
215	2000	1500	1000	380

Lubricants

QCB stainless inserts are factory filled with an FDA approved grease and could be considered "sealed for life" in many cases. Should relubrication be required QCB recommendations include

Brand	Grease	Operating temp range
COUGAR	8025	-20 - +140 C
KLUBER	Paraliq GA343	-30 - +120 C

Other lubricants are available for extreme conditions.

Other QCB Products include

- QCB Ball bearings
- QCB Cylindrical roller bearings
- QCB Needle roller bearings & cam followers
- QCB Spherical roller bearings
- QCB Extreme Spherical roller bearings for vibratory applications
- QCB Bearing housings
- QCB Stainless bearings & housings
- QCB Slewing rings & Slewing drives
- QCB Agri-hubs

Ask for details!

QCB Turns your world!

QCB THERMOPLASTIC BEARINGS are exclusively distributed by

NBC Group Ltd
Unit D, Stafford Park 18, Telford, TF3 3BN, England
T: +44 (0)1952 222300 E: telford@nbcgroup.co.uk

NBC Belfast
20 Ravenhill Road, Belfast, BT6 8EA
T: +44 (0)2890 732321 E: belfast@nbcgroup.co.uk



www.nbcgroup.co.uk