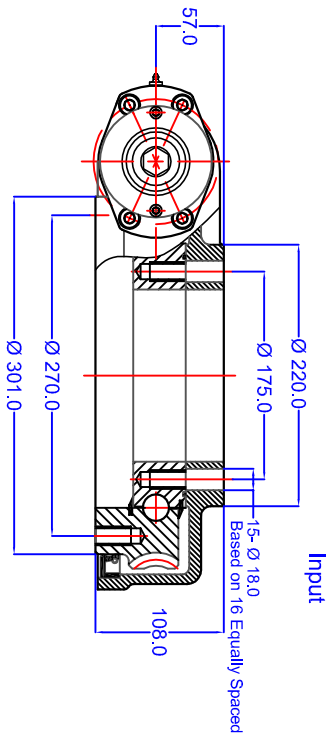
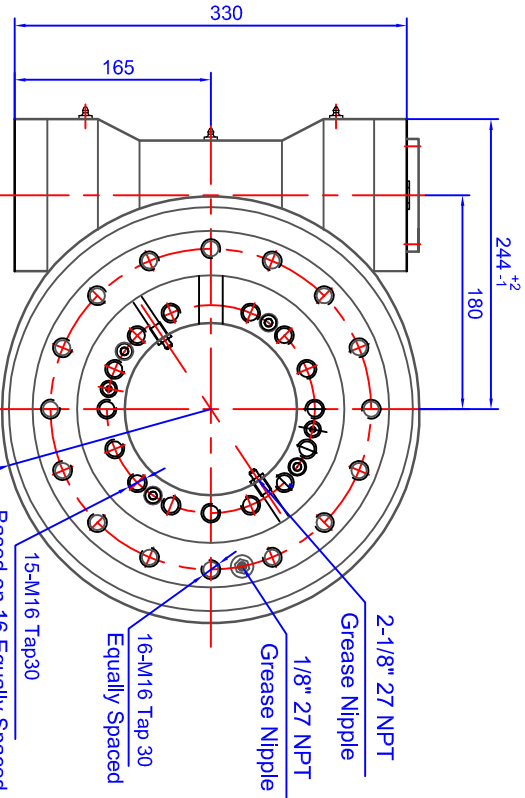


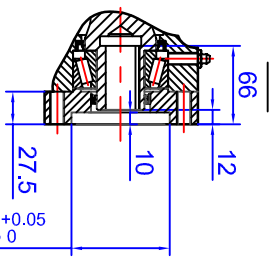
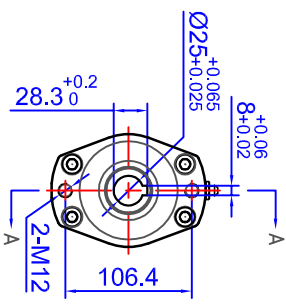
GEN. TOLERANCES	▽	0.5 - 6	±0.1	6 - 30	±0.2	30 - 120	±0.3	120 - 315	±0.5	315 - 1000	±0.8	1000 - 2000	±1.2	2000 - 4000	±2	4000 - 8000	±3
GEN. MACHINING	▽	0.4	▽	1.6	▽	3.2	▽	6.3	▽	12.6	▽	25 ROUGH	▽		▽		



Worm Drive Performance Data	
Rated Output Speed	± 2.5 rpm
Max Output Torque	8 kNm / 5904 lbf.ft
Max Tilting Moment Torque	33.9 kNm / 25.02x10 <sup>3</sup> lbf.ft
Holding Torque	38.7 kNm / 28.56x10 <sup>3</sup> lbf.ft
Max Axial Load	550 kN / 123.7x10 <sup>3</sup> lbf
Max Radial Load	205 kN / 46.1x10 <sup>3</sup> lbf
Ratio of Worm Gear	62:1
Backlash	< 0.15 °
Gear Efficiency	4.0%

MOMENT LOAD CHART	
Axial Load & Tilting Moment	
33.9	30.51
27.12	23.73
20.34	16.95
100	200
300	400
500	600
Axial Load kN	



GEAR DATA	SPUR	WORM	HELICAL
WORM GEAR RATIO	62:1		
OUTPUT TORQUE	8 kNm		
HOLDBACK TORQUE	38.7 kNm		
RATED OUTPUT SPEED	< 2.5 rpm		
TRACKING PRECISION	= < 0.17"		
MAXIMUM MOMENT LOAD	M16 CS18		
MAXIMUM TORQUE	M16 CS18		
MAXIMUM SPEED	M16 CS18		
MAXIMUM LOAD	M16 CS18		

BOLT DATA	
INNER	16-1 =
OUTER	16 =
GREASE HOLES	G'
LOADING PLUG	FS
SEAL SIZE	TBA

Designed in accordance with designated QCB SLEWING RING STANDARDS  
 Non toleranced dimensions to ISO 2768-1 m  
 All burrs and sharp edges to be removed. Standard chamfer 1mm x 45°  
 Internal radial and axial clearance figures to QCB standard 2014 or revisions thereof  
 The HARDNESS GAP is to be indicated by stamped letter R or a PAINT mark on the exterior surface  
 The high point of gear eccentricity to be indicated by GREEN or BLUE paint on 3 teeth

REV	DATE	MODIFICATION	REVISED BY
A			

**QCB**  
Bearings

SLEWING  
RINGS &  
DRIVES

Orleton Lane, Wellington, Telford, TF1 2BG, UK  
 P: 01962 222300 F: 01962 242938  
 www.nbogroup.co.uk

QCB® is a registered trademark of NBC Group Ltd  
 Imported by NBC Group Ltd

DRAWN:	LJM
DATE:	12/07/2016
CHECKED:	LJM

WGWEA 9 62 25 HR

QCB RS 112016

© NBC GROUP LTD. NOT TO BE COPIED WITHOUT PERMISSION