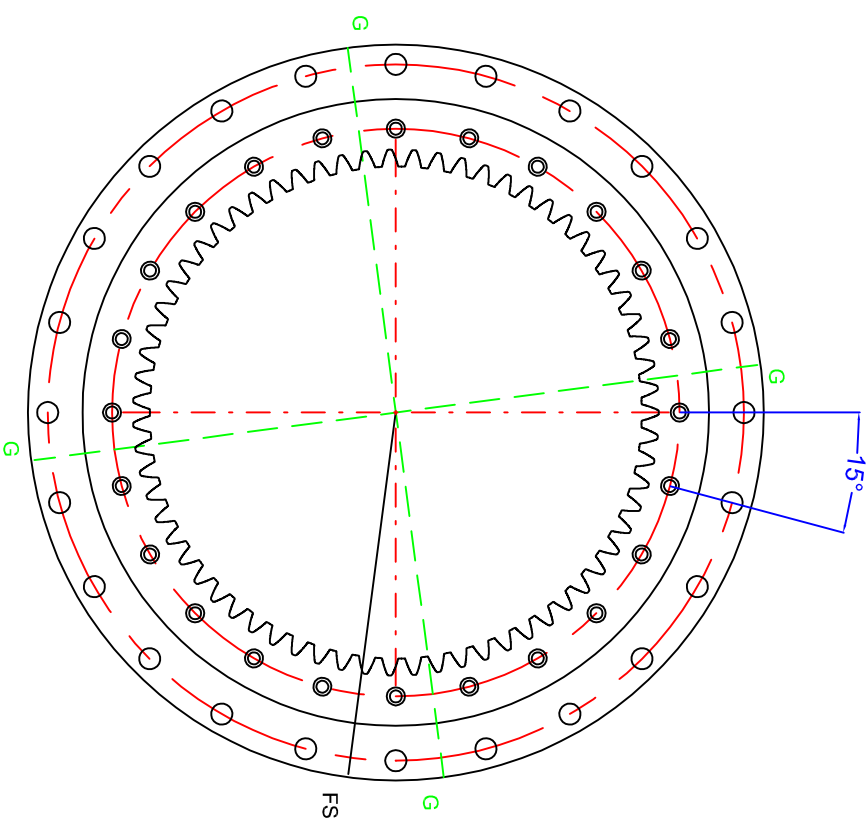
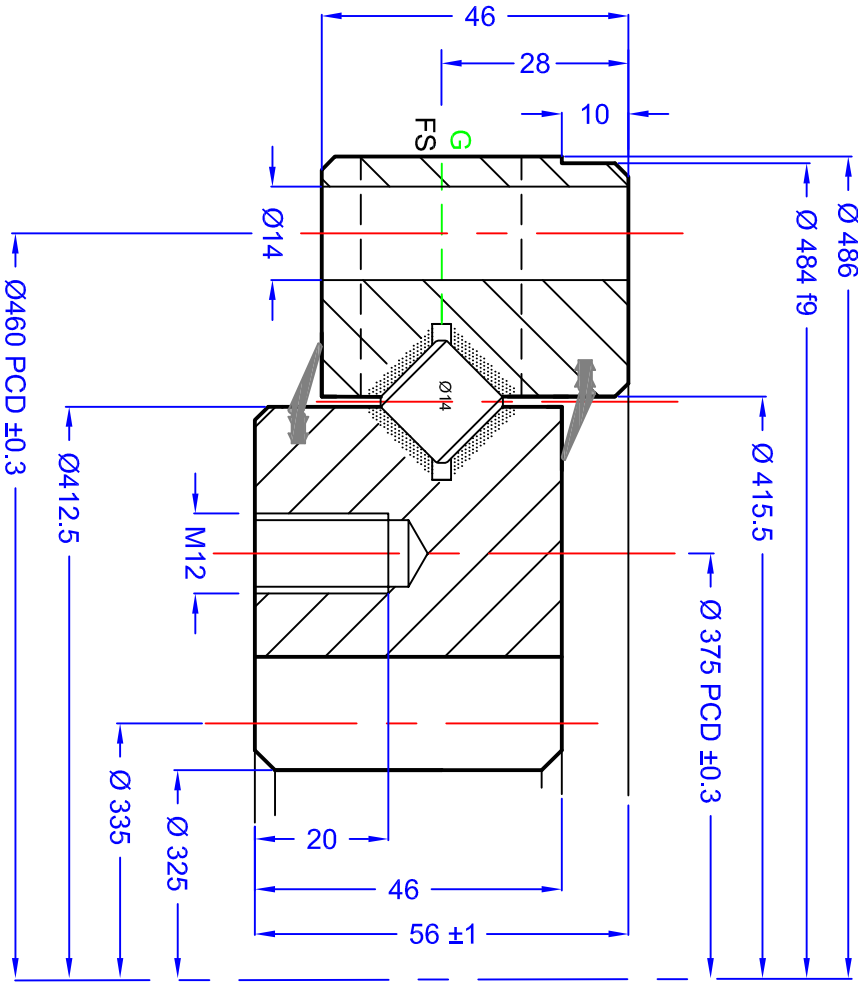
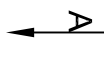


GEN. TOLERANCES	0.5 - 6	±0.1	6 - 30	±0.2	30 - 120	±0.3	120 - 315	±0.5	315 - 1000	±0.8	1000 - 2000	±1.2	2000 - 4000	±2	4000 - 8000	±3
GEN. MACHINING	0.4	0.4	1.6	1.6	3.2	3.2	6.3	6.3	12.6	25	25	25	25	25	25	25



GEAR DATA	SPUR	WORM	HELICAL	Designed in accordance with designated QCB SLEWING RING STANDARDS Non tolerated dimensions to ISO 2768-1 m All burrs and sharp edges to be removed. Standard corner chamfer 1mm x 45° Internal radial and axial clearance figures to QCB standard 2014 or revisions thereof. The HARDNESS GAP is to be indicated by stamped letter R or a PAINT mark on the exterior surface. The high point of gear eccentricity to be indicated by GREEN or BLUE paint on 3 teeth
	NO	NO	5	
NUMBER OF TEETH (z)	67	MODULE (m)	5	
PRESSURE ANGLE (α)	20°	DP		
ADDENDUM COEFFICIENT (x)	0	CALCULATED GEAR STRENGTH		
PROFILE CORRECTION (y)	0			
TRUNCATION (km)	0	Fz (Normal)	KN	
PITCH CIRCLE DIAMETER	335 mm	Fz (Face)	KN	
MEASUREMENT ON K TEETH	mm	Pin Diameter	mm	
RUNOUT NOT HARDENED/HARDENED		LOADING PUG	'FS'	SOFT ZONE
		SEAL SIZE	TBA	

REV	DATE	MODIFICATION	REVISED BY
1			

QCB
Bearings

SLEWING
RINGS &
DRIVES

Orleton Lane, Wellington, Telford, TF1 2BG, UK
P: 01962 222300 F: 01962 242938
www.nbcbgroup.co.uk

SIG 486 X14 01 AA LM

QCB RS 11/2016

DRAWN: LW
DATE: 04/01/2016
CHECKED: LM