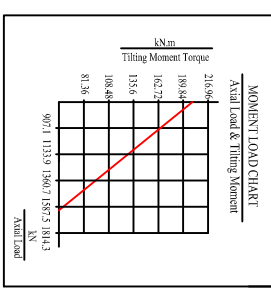
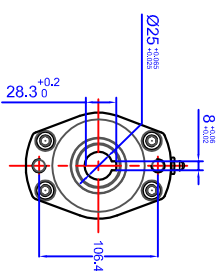
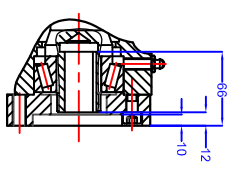
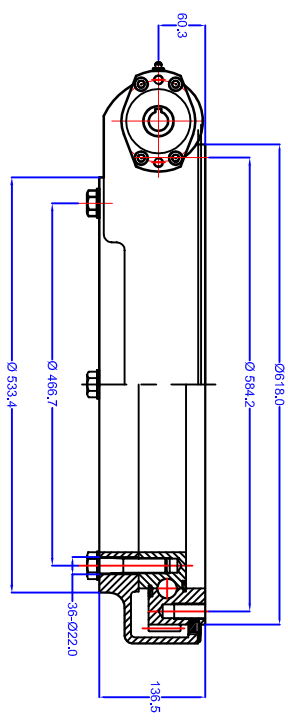
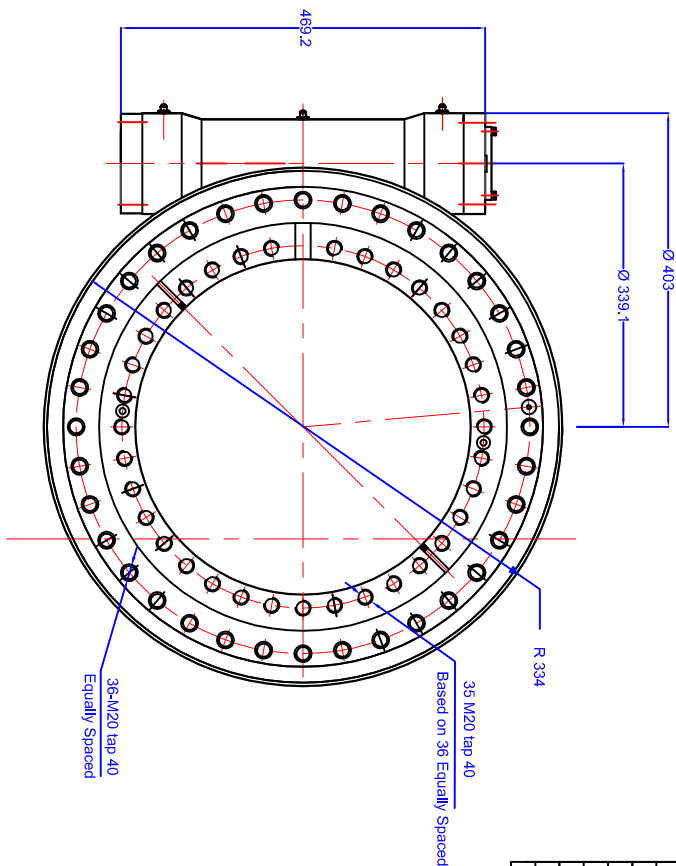


GEN. TOLERANCES	▽	0.5 - 6	±0.1	6 - 30	±0.2	30 - 120	±0.3	120 - 315	±0.5	315 - 1000	±0.8	1000 - 2000	±1.2	2000 - 4000	±2	4000 - 8000	±3
GEN. MACHINING	▽	0.4	▽	1.6	▽	3.2	▽	6.3	▽	12.6	▽	25 ROUGH	▽		▽		

Gear Ratio	125:1
Rated Output Torque	15000 N.m
Output Torque (Max.)	18000 N.m
Tilting Moment Torque (Max.)	203.4 KN.m
Holding Torque	105.8 KN.m
Axial Load (Max.)	1598 kN
Self Locking Gears	Yes
Weight	158 kg



GEAR DATA	SPUR	WORM	HELICAL
	Designed in accordance with designated QCB SLEWING RING STANDARDS		

WORM GEAR RATIO	125:1
OUTPUT TORQUE	15 kNm
HOLDBACK TORQUE	105.8 kNm
RATED OUTPUT SPEED	< 2.5 rpm
TRACKING PRECISION	≠ < 0.17°

MAXIMUM MOMENT LOAD	INNER	36-1 =	MOUNTING HOLES	M20 CS22	TURNING TORQUE	AXIAL PLAY
	OUTER	36 =	MOUNTING HOLES	M20	MATERIAL	RADIAL PLAY

GREASE HOLES	G'	FS	SOFT ZONE	R'	WEIGHT	158 kg
LOADING PLUG	FS				SEAL SIZE	TBA

© NBC GROUP LTD. NOT TO BE COPIED WITHOUT PERMISSION

QCB Bearings SLEWING RINGS & DRIVES

Orleton Lane, Wellington, Telford, TF1 2BG, UK
 P: 01962 222300 F: 01962 242938
 www.nbcbgroup.co.uk

QCB® is a registered trademark of NBC Group Ltd

REV	DATE	MODIFICATION	REVISED BY
A			

WGSE 21 125 25 HR

QCB RS 11/2016

DRAWN:	LJM
DATE:	12/07/2016
CHECKED:	LJM