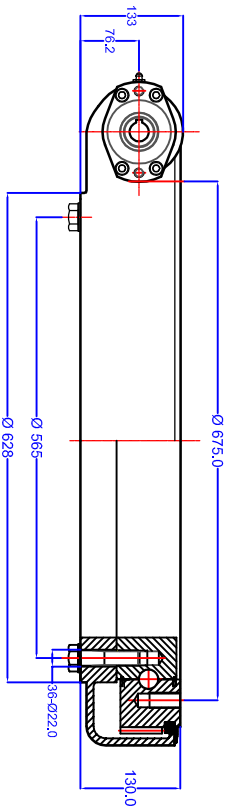
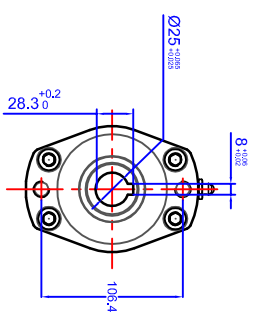
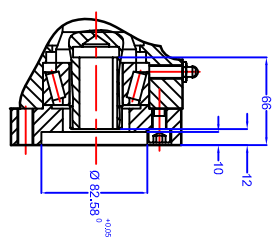
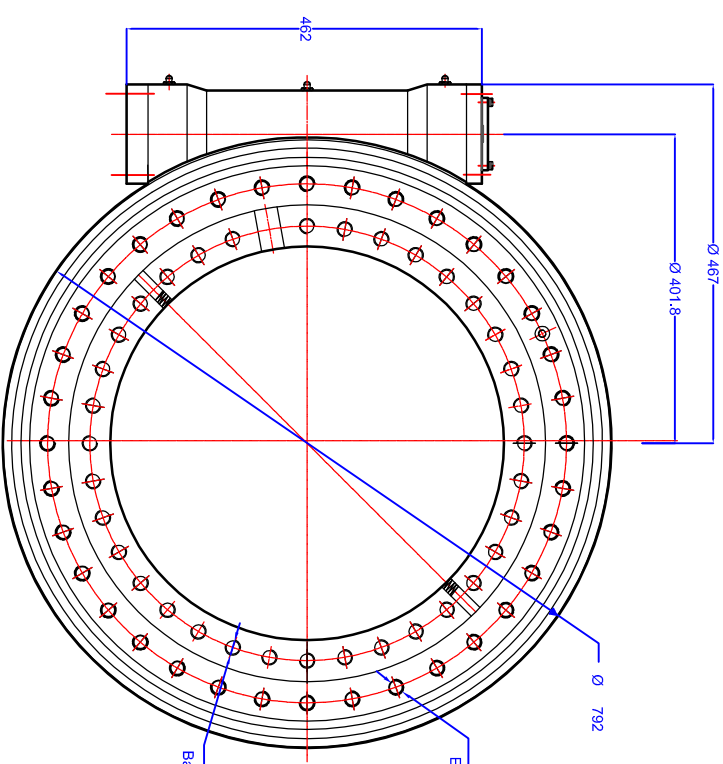
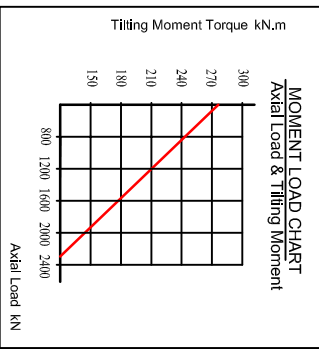


GEN. TOLERANCES		0.5 - 6	±0.1	6 - 30	±0.2	30 - 120	±0.3	120 - 315	±0.5	315 - 1000	±0.8	1000 - 2000	±1.2	2000 - 4000	±2	4000 - 8000	±3
GEN. MACHINING	✓	0.4	✓	1.6	✓	3.2	✓	6.3	✓	12.6	✓	25 ROUGH	✓		✓		

Gear Ratio	150:1
Rated Output Torque	18000 N.m
Output Torque (Max.)	20000 N.m
Tilting Moment Torque (Max.)	271.1 kN.m
Holding Torque	158.3 kN.m
Axial Load (Max.)	2360 kN
Self Locking Gears	Yes
Weight	230 kg



GEAR DATA	SPUR	WORM	HELICAL	Designed in accordance with designated QCB SLEWING RING STANDARDS Non tolerated dimensions to ISO 2768-1 m All burrs and sharp edges to be removed. Standard corner chamfer 1mm x 45° Internal radial and axial clearance figures to QCB standard 2014 or revisions thereof. The HARDNESS GAP is to be indicated by stamped letter R or a PAINT mark on the exterior surface. The high point of gear eccentricity to be indicated by GREEN or BLUE paint on 3 teeth				
	WORM GEAR RATIO	150:1						
OUTPUT TORQUE	18 kNm							
HOLDBACK TORQUE	158.3 kNm							
RATED OUTPUT SPEED	< 2.5 rpm							
TRACKING PRECISION	≠ < 0.17°							
MAXIMUM MOMENT LOAD		INNER	36-1 =	MOUNTING HOLES	M20 CS22	TURNING TORQUE	AXIAL PLAY	
		OUTER	36 =	MOUNTING HOLES	M20	MATERIAL	RADIAL PLAY	
		GREASE HOLES	G'		3/8" X27 NPT	WEIGHT		158 kg
		LOADING PLUG	FS'	SOFT ZONE	R'			mm
				SEAL SIZE	TBA			
© NBC GROUP LTD. NOT TO BE COPIED WITHOUT PERMISSION								

REV	DATE	MODIFICATION	REVISED BY
A			

QCB Bearings

SLEWING RINGS & DRIVES

Orleton Lane, Wellington, Telford, TF1 2BG, UK
 P: 01962 222300 F: 01962 242938
 www.nbcbgroup.co.uk

QCB® is a registered trademark of NBC Group Ltd

WGSE 25 150 25 HR

QCB NS 11/2016

DRAWN:	LJM
DATE:	12/07/2016
CHECKED:	LJM