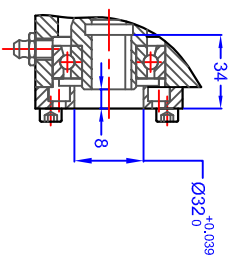
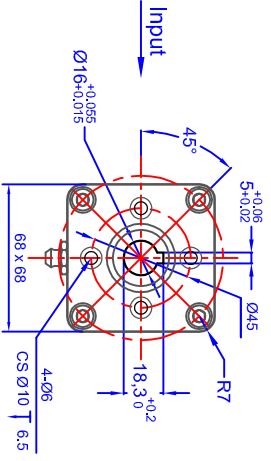
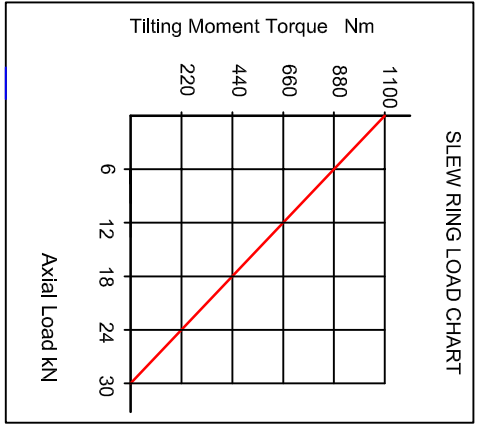
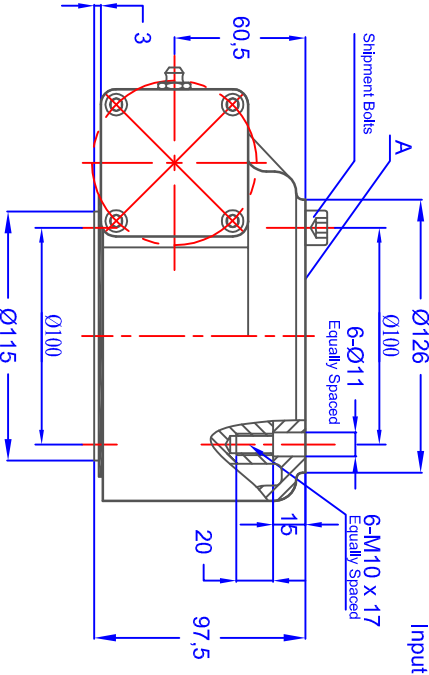
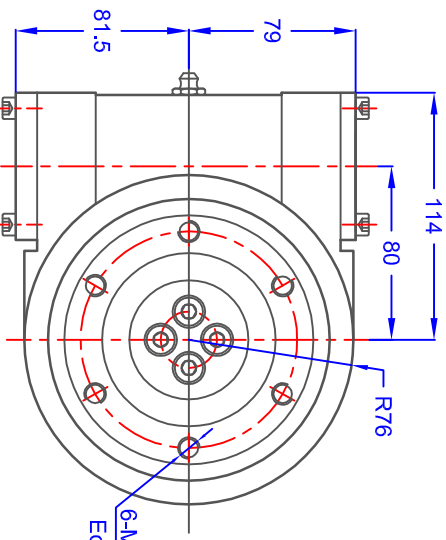


GEN. TOLERANCES		0.5 - 6	±0.1	6 - 30	±0.2	30 - 120	±0.3	120 - 315	±0.5	315 - 1000	±0.8	1000 - 2000	±1.2	2000 - 4000	±2	4000 - 8000	±3
GEN. MACHINING	√	0.4	√	1.6	√	3.2	√	6.3	√	12.6	√	25 ROUGH	√		√		



GEAR DATA	SPUR	WORM	HELICAL	
	WORM GEAR RATIO	62:1		
	OUTPUT TORQUE	400 Nm		
	HOLDBACK TORQUE	2000 Nm		
	RATED OUTPUT SPEED	< 2.5 rpm		
TRACKING PRECISION	= < 0.2°			
MAXIMUM MOMENT LOAD				

BOLT DATA	UPPER	6 =	MOUNTING HOLES	M10 CS11	AXIAL PLAY	
	LOWER	6 =	MOUNTING HOLES	M10	ROTATIONAL PLAY	
GREASE HOLES	GREASE HOLES	6 =	TURNING TORQUE			
	LOADING PLUG	FS	WEIGHT	12 Kg		
SEAL SIZE	SOFT ZONE	R				
	SEAL SIZE	TBA				

Designed in accordance with designated QCB SLEWING RING STANDARDS
 Non toleranced dimensions to ISO 2768-1 m
 All burrs and sharp edges to be removed. Standard corner chamfer 1mm x 45°
 Internal radial and axial clearance figures to QCB standard 2014 or revisions thereof
 The HARDNESS GAP is to be indicated by stamped letter R or a PAINT mark on the exterior surface
 The high point of gear eccentricity to be indicated by GREEN or BLUE paint on 3 teeth

QCB
Bearings

REV. DATE

MODIFICATION

Revised by

SLEWING RINGS & DRIVES

Orleton Lane, Wellington, Telford, TF1 2BG, UK

P: 01962 222300 F: 01962 242938

www.nbcbgroup.co.uk

WGSE 3C 62 16 HR

QCB® is a registered trademark of NBC Group Ltd

DATE: 12/07/2016

CHECKED: LLM