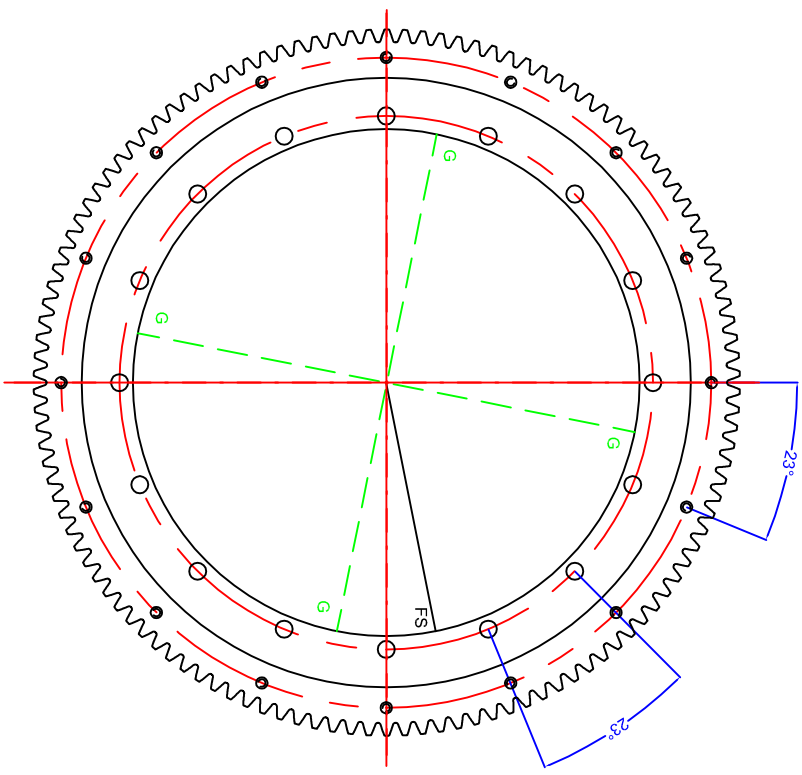
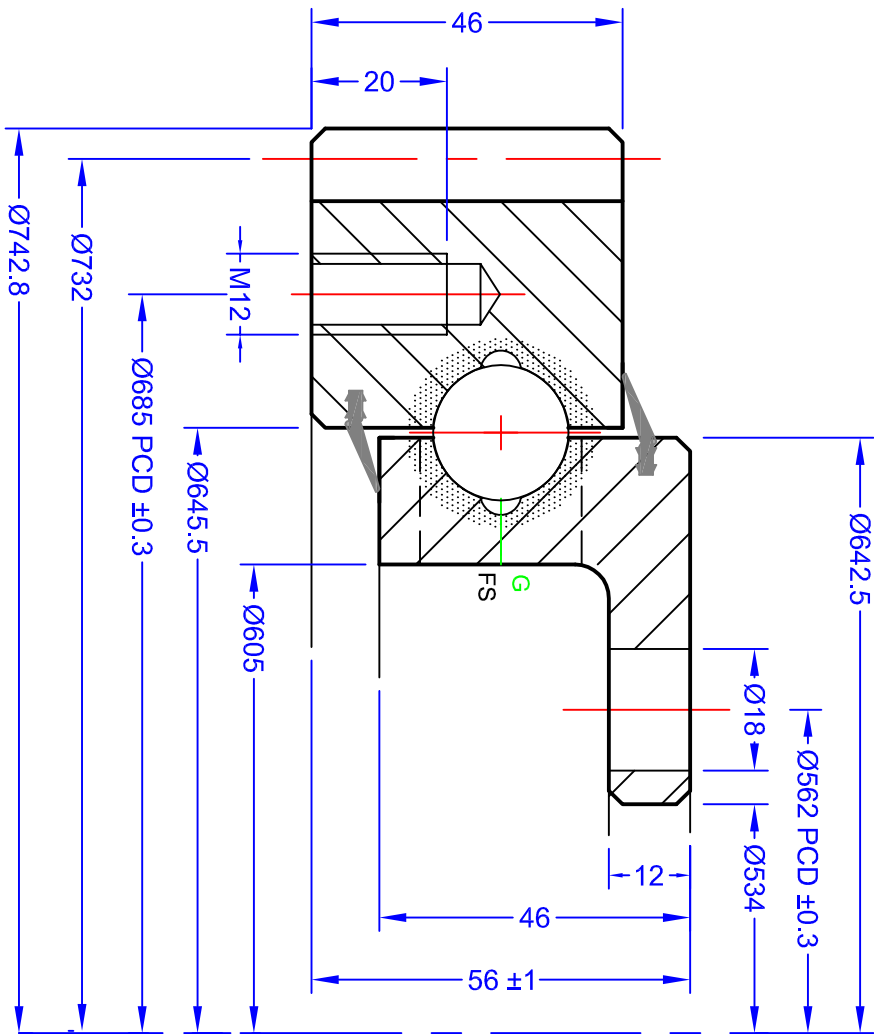
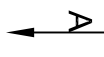


GEN. TOLERANCES	0.5 - 6	±0.1	6 - 30	±0.2	30 - 120	±0.3	120 - 315	±0.5	315 - 1000	±0.8	1000 - 2000	±1.2	2000 - 4000	±2	4000 - 8000	±3
GEN. MACHINING	0.4	1.6	3.2	6.3	12.6	25	50	100	200	400	800	1600	3200	6400	12800	25600



GEAR DATA	SPUR
-----------	------

HARDED GEAR	NO
NUMBER OF TEETH (Z)	122
MODULE (m)	6
PRESSURE ANGLE (α)	20°
ADDENDUM COEFFICIENT (x)	0
PROFILE CORRECTION (xm)	0
TRUNCATION (km)	0.6 mm
PITCH CIRCLE DIAMETER	732 mm
MEASUREMENT ON K TEETH	mm
RUNOUT NOT HARDED/HARDED	mm

Designed in accordance with designated QCB SLEWING RING STANDARDS

All burrs and sharp edges to be removed. Standard corner chamfer 1mm x 45°
Internal radial and axial clearance figures to QCB standard 2014 or revisions thereof
The HARFNESS GAP is to be indicated by stamped letter R or a PAINT mark on the exterior surface
The high point of gear eccentricity to be indicated by GREEN or BLUE paint on 3 teeth

BOLT DATA

INNER	16 =	MOUNTING HOLES	Ø 18
OUTER	16 =	MOUNTING HOLES	M12
GREASE HOLES	G'	4 X M8	
LOADING PLUG	'FS'	SOFT ZONE	'R'
SEAL SIZE		TBA	



SLEWING RINGS & DRIVES

Orleton Lane, Wellington, Telford, TF1 2BG, UK
P: 01962 222300 F: 01962 242938
www.nbogroup.co.uk

FEEG 750 20 00 AA LM

REVISED BY	LJM
DATE:	21/2/2015
CHECKED:	LJM