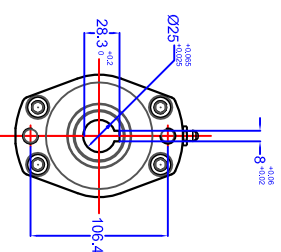
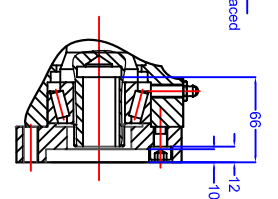
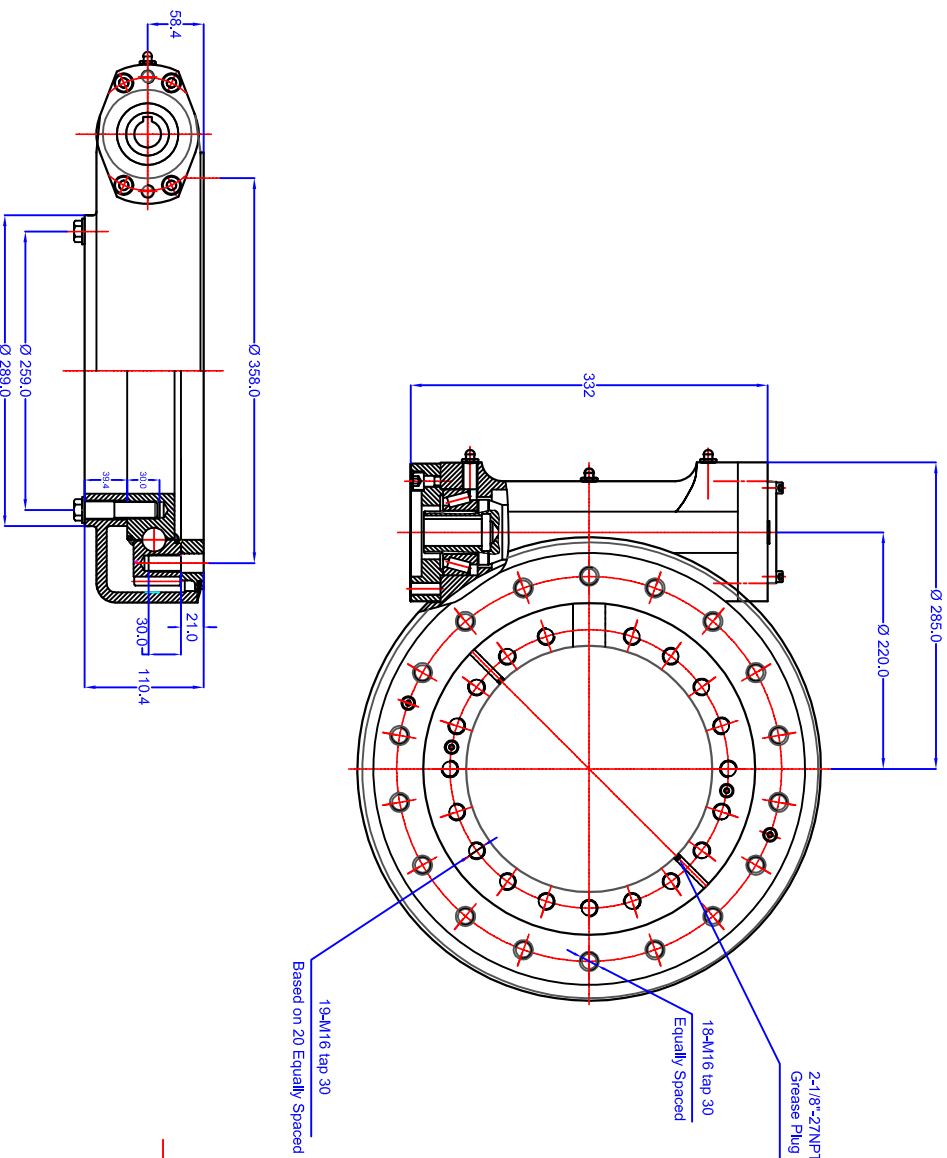
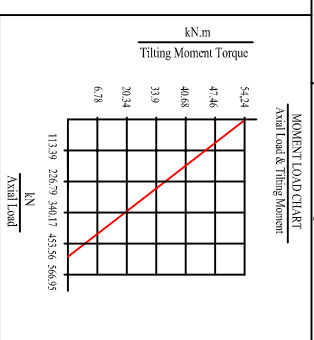


GEN. TOLERANCES	0.5 - 6	±0.1	6 - 30	±0.2	30 - 120	±0.3	120 - 315	±0.5	315 - 1000	±0.8	1000 - 2000	±1.2	2000 - 4000	±2	4000 - 8000	±3
GEN. MACHINING	▽	0.4	▽	1.6	3.2	▽	6.3	▽	12.6	▽	25 ROUGH	▽		▽		▽

Slewing Drive Performance Data	
Gear Ratio	78:1
Rated Output Torque	7500 N.m
Output Torque (Max.)	8500 N.m
Tilting Moment Torque (Max.)	54.3 KN.m
Holding Torque	43 KN.m
Axial Load (Max.)	475 kN
Self-Locking Gears	Yes
Weight	60 kg



GEAR DATA	SPUR	WORM	HELICAL	DESIGNED IN ACCORDANCE WITH DESIGNATED QCB SLEWING RING STANDARDS	REV	DATE	MODIFICATION	REVISED BY
WORM GEAR RATIO	78:1			Non toleranced dimensions to ISO 2768-1 m All burrs and sharp edges to be removed. Standard corner chamfer 1mm x 45° Internal radial and axial clearance figures to QCB standard 2014 or revisors thereof The HARDNESS GAP's to be indicated by stamped letter R or a PAINT mark on the exterior surface The high point of gear eccentricity to be indicated by GREEN or BLUE paint on 3 teeth	A			
OUTPUT TORQUE	7.5 KNm							
HOLDBACK TORQUE	43 KNm							
RATED OUTPUT SPEED	< 2.5 rpm							
TRACKING PRECISION	≠ < 0.17°							
MAXIMUM MOMENT LOAD								
MAXIMUM LOADS								
BOLT DATA								
INNER	20-1	=	MOUNTING HOLES	M16 CS18				
GREASE HOLES	18	=	MOUNTING HOLES	M16 CS18				
LOADING PLUG	'FS'		SOFT ZONE	R'				
SEAL SIZE	TBA							
AXIAL PLAY								
RADIAL PLAY								
TURNING TORQUE								
MATERIAL								
WEIGHT				60 kg				
REPT OF HARDNESS (STEEL)				mm				
OCB or NBC DRAWING NUMBER					Imported by NBC Group Ltd Orleton Lane, Wellington, Telford, TF1 2BG, UK P: 01962 222300 F: 01962 242938 www.nbgroup.co.uk			
<b>WGSE 12 78 25 HR</b>					DRAWN: LJM DATE: 12/07/2016 CHECKED: LJM			
© NBC GROUP LTD. NOT TO BE COPIED WITHOUT PERMISSION					QCB RS 112016			