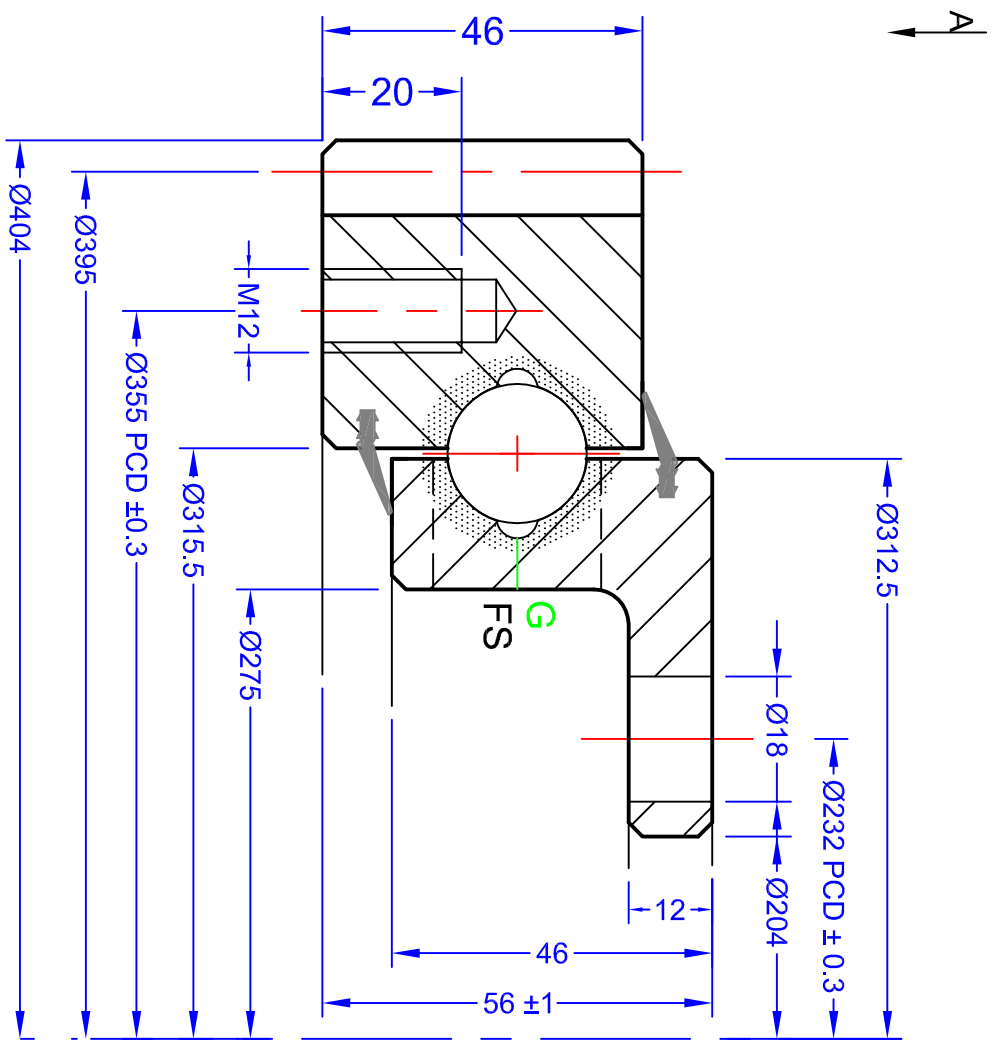


GEN. TOLERANCES	0.5 - 6	±0.1	6 - 30	±0.2	30 - 120	±0.3	120 - 315	±0.5	315 - 1000	±0.8	1000 - 2000	±1.2	2000 - 4000	±2	4000 - 8000	±3
GEN. MACHINING	0.4	0.4	1.6	3.2	6.3	12.6	25	50	100	200	400	800	1600	3200	6400	



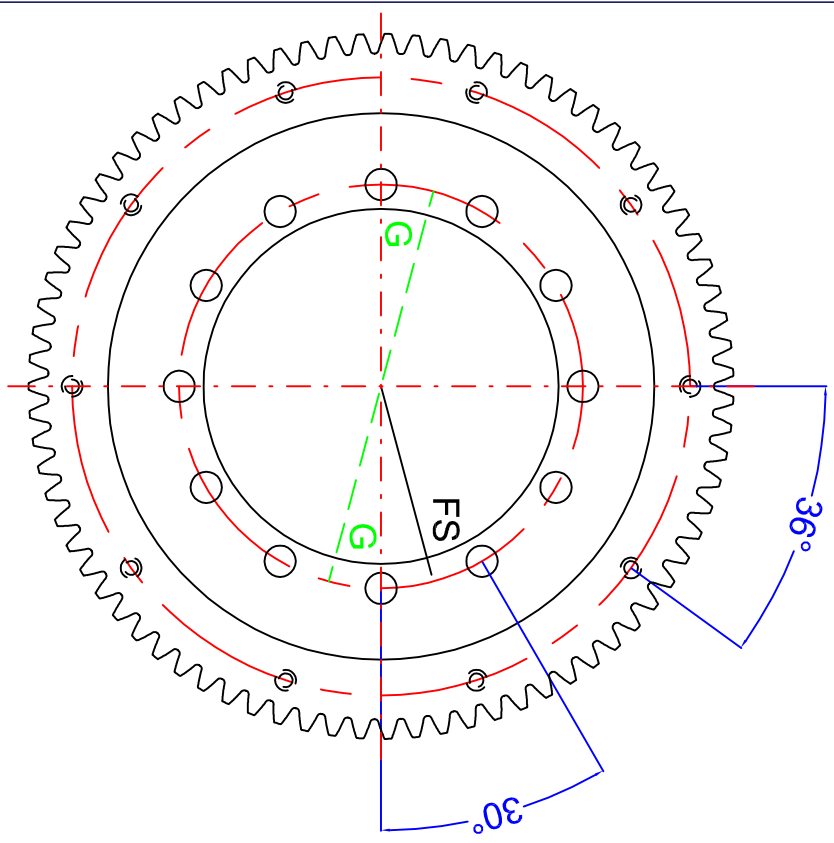
GEAR DATA

HARDED GEAR	NO	MODULE (m)	5
NUMBER OF TEETH (z)	79	DP	
PRESSURE ANGLE (α)	20°	CALCULATED GEAR STRENGTH	
ADDENDUM COEFFICIENT (x)	0	INNER	12 =
PROFILE CORRECTION (y)	0	OUTER	10 =
TRUNCATION (mm)	-0.5 mm	GREASE HOLES	G'
PITCH CIRCLE DIAMETER	395 mm	LOADING PLUG	'FS'
MEASUREMENT ON K TEETH	mm	SEAL SIZE	TBA
RUNOUT NOT HARDED/HARDED	mm		

BOLT DATA

DESIGNED IN ACCORDANCE WITH DESIGNATED QCB SLEWING RING STANDARDS	
Non tolerated dimensions to ISO 2768-1 m	
All burrs and sharp edges to be removed. Standard corner chamfer 1mm x 45°	
Internal radial and axial clearance figures to QCB standard 2014 or revisions thereof	
The HARNESS GAP is to be indicated by stamped letter R or a PAINT mark on the exterior surface	
The high point of gear eccentricity to be indicated by GREEN or BLUE paint on 3 teeth	
AXIAL PLAY	0.07-0.17 mm
RADIAL PLAY	0.07-0.17 mm
TURNING TORQUE	Nm
WEIGHT	23.5 kg (54lb)

VIEW ON 'A' SHOWING DRILLING PATTERN AND OTHER DETAILS



REV	DATE	MODIFICATION	REVISED BY
1			

QCB Bearings

SLEWING RINGS & DRIVES

Orleton Lane, Wellingborough, Telford, TF1 2BG, UK

P: 01962 222300 F: 01962 242938
www.nbcbgroup.co.uk

QCB® is a registered trademark of NBC Group Ltd

FEG 404 20 00 AA LM

© NBC GROUP LTD. NOT TO BE COPIED WITHOUT PERMISSION

DRAWN:	LW
DATE:	2/12/2015
CHECKED:	LM