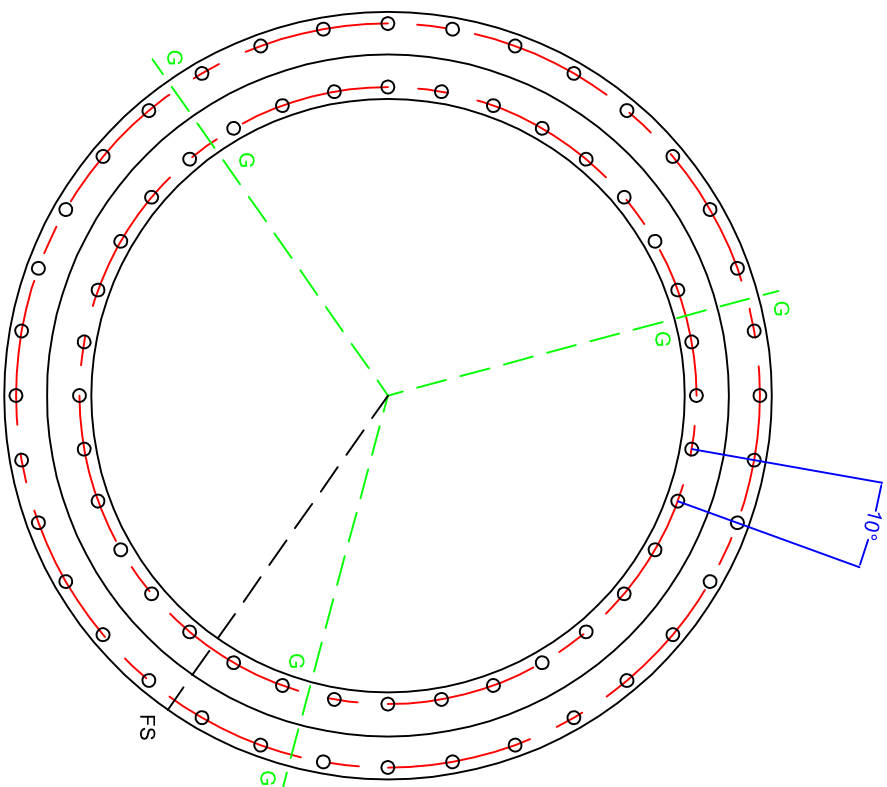
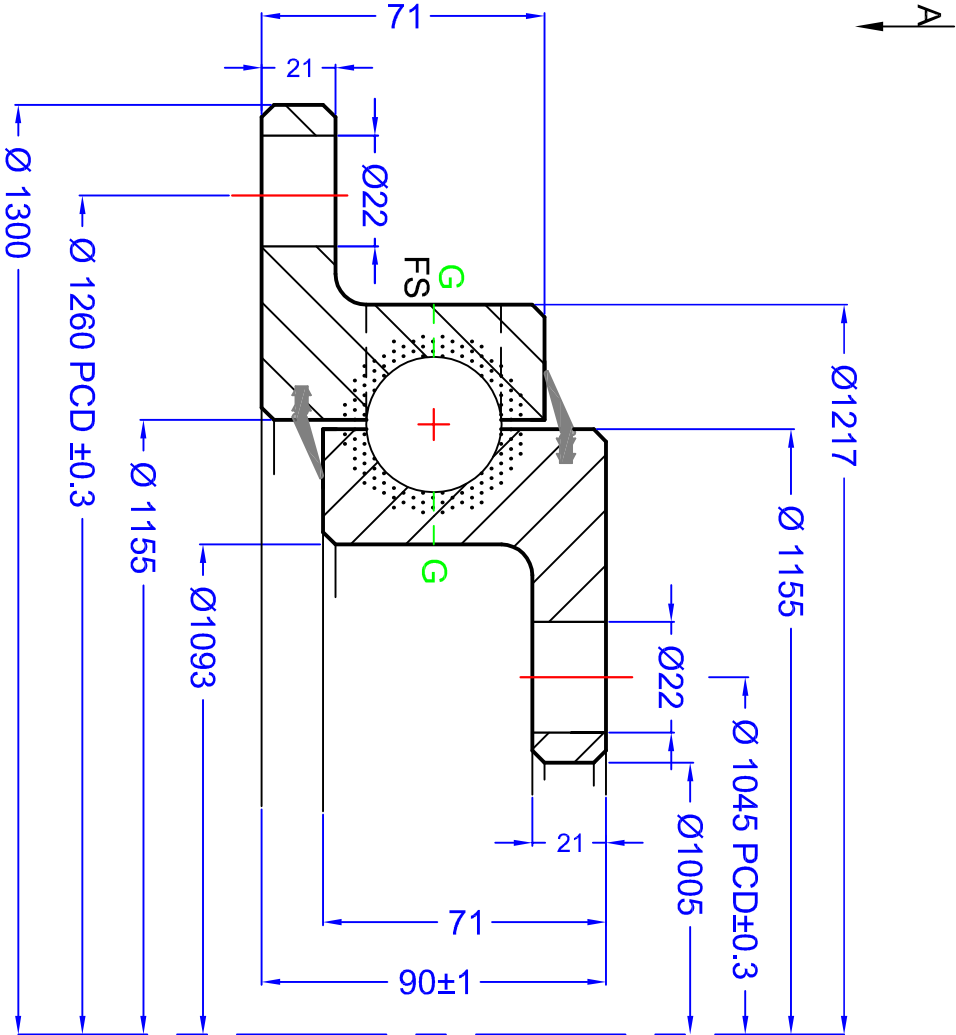


GEN. TOLERANCES	0.5 - 6	±0.1	6 - 30	±0.2	30 - 120	±0.3	120 - 315	±0.5	315 - 1000	±0.8	1000 - 2000	±1.2	2000 - 4000	±2	4000 - 8000	±3
GEN. MACHINING		0.4		1.6		3.2		6.3		12.6	25 ROUGH					



VIEW ON 'A' SHOWING DRILLING PATTERN AND OTHER DETAILS

GEAR DATA										BOLT DATA									
HARDENED GEAR		MODULE (m)								INNER	36 =	MOUNTING HOLES	Ø 22	TURNING TORQUE		AXIAL PLAY	0.15-0.35 mm		
NUMBER OF TEETH (z)		DP								OUTER	36 =	MOUNTING HOLES	Ø 22	MATERIAL	42CrMo4 Q&T	WEIGHT	159 kg (683)		
PRESSURE ANGLE (α)										GREASE HOLES	'G'	2 X 3 M10		WARRANTY (years)					
ADDENDUM COEFFICIENT (x)										LOADING PLUG	'FS'	SOFT ZONE	'R'						
PROFILE CORRECTION (y)										SEAL SIZE	TBA								
TRUNCATION (mm)																			
PITCH CIRCLE DIAMETER																			
MEASUREMENT ON K TEETH																			
RUNOUT NOT HARDENED/HARDENED																			
© NBC GROUP LTD. NOT TO BE COPIED WITHOUT PERMISSION																			

Designed in accordance with designated QCB SLEWING RING STANDARDS

Non tolerated dimensions to ISO 2768-1 m

All burrs and sharp edges to be removed; Standard corner chamfer 1mm x 45°

Internal radial and axial clearance figures to QCB standard 2014 or revisions thereof

The HARDNESS GAP is to be indicated by stamped letter R or a PAINT mark on the exterior surface

The High point of gear eccentricity to be indicated by GREEN or BLUE paint on 3 teeth

REV	DATE	MODIFICATION	REVISED BY
1			

SLEWING RINGS & DRIVES

Orleton Lane, Wellington, Telford, TF1 2BG, UK

P: 01952 222300 F: 01952 242938

www.nbgroup.co.uk

QCB® is a registered trademark of NBC Group Ltd

QCB RS 11/2016

FUN 1300 32 00 AA LM

DRAWN: LW

DATE: 19/01/2016

CHECKED: LLM