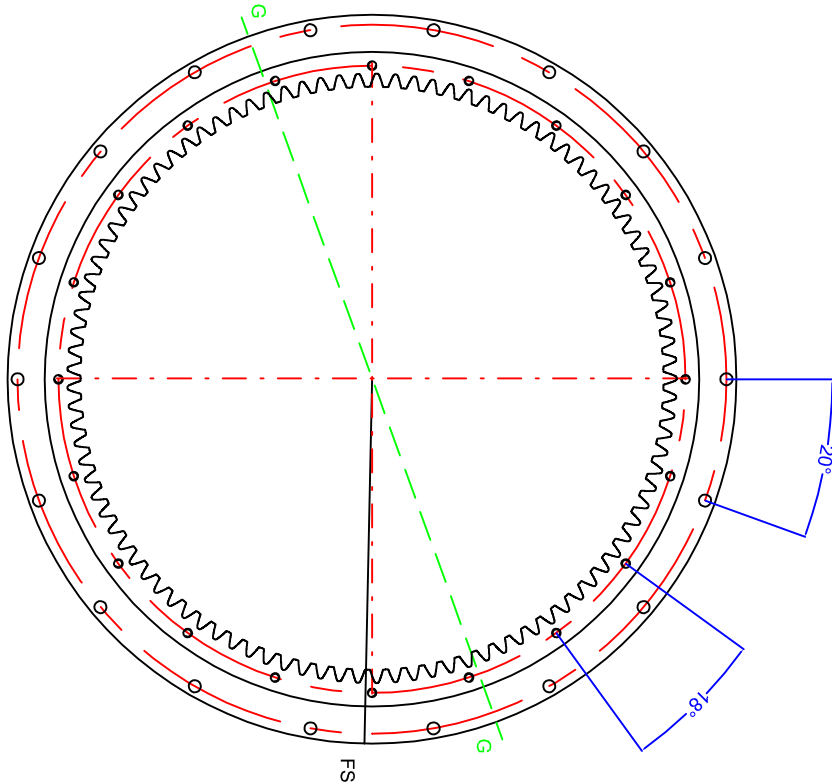
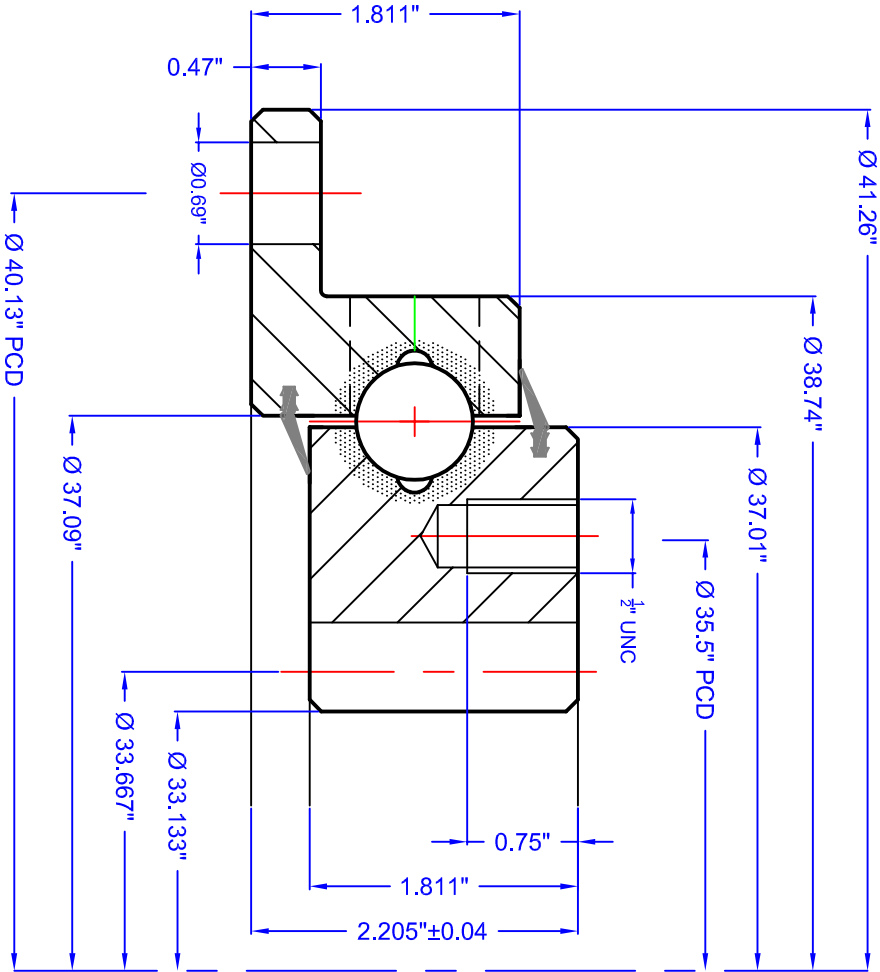
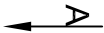


| | | | | | | | | | | | | | | | | | |
|-----------------|---|---------|------|--------|------|----------|------|-----------|------|------------|------|-------------|------|-------------|----|-------------|----|
| GEN. TOLERANCES | | 0.5 - 6 | ±0.1 | 6 - 30 | ±0.2 | 30 - 120 | ±0.3 | 120 - 315 | ±0.5 | 315 - 1000 | ±0.8 | 1000 - 2000 | ±1.2 | 2000 - 4000 | ±2 | 4000 - 8000 | ±3 |
| GEN. MACHINING | ✓ | 0.4 | ✓ | 1.6 | ✓ | 3.2 | ✓ | 6.3 | ✓ | 12.6 | ✓ | 25 ROUGH | ✓ | | ✓ | | |



| GEAR DATA | | SPUR | WORM | HELICAL |
|---|---------|--------------------------|---------------------|--------------|
| HARDENED GEAR | NO | | | |
| NUMBER OF TEETH (Z) | 101 | | MODULE (m) | |
| PRESSURE ANGLE (α) | 20° | | DP | 3 |
| ADDENDUM COEFFICIENT (X) | | | | |
| PROFILE CORRECTION (Ym) | | | | |
| | | CALCULATED GEAR STRENGTH | | |
| TRUNCATION (km) | | Fz (Normal) | KN | INNER |
| PITCH CIRCLE DIAMETER | 33.667" | Fz (Max) | KN | OUTER |
| MEASUREMENT ON K TEETH | mm | Pin Diameter | mm | |
| RUNOUT NOT HARDENED/HARDENED | | LOADING PLUG | 'FS' | SOFT ZONE |
| © NBC GROUP LTD. NOT TO BE COPIED WITHOUT PERMISSION | | SEAL SIZE | TBA | |
| Designed in accordance with designated QCB SLEWING RING STANDARDS | | | | |
| Non tolerated dimensions to ISO 2768-1 m | | | | |
| All burrs and sharp edges to be removed; Standard corner chamfer 1mm x 45° | | | | |
| Internal radial and axial clearance figures to QCB standard 2014 or revisions thereof | | | | |
| The HARDNESS GAP is to be indicated by stamped letter R or a PAINT mark on the exterior surface | | | | |
| The high point of gear eccentricity to be indicated by GREEN or BLUE paint on 3 teeth | | | | |
| | | BOLT DATA | | |
| | | 20 = | MOUNTING HOLES | 1/2" UNC |
| | | 18 = | MOUNTING HOLES | Ø 0.69" |
| | | 'G' | 2 x 1/4"-28 UNF | |
| | | 'R' | WEIGHT | 75 kg (BS) |
| | | | AXIAL PLAY | 0.12-0.28 mm |
| | | | RADIAL PLAY | 0.12-0.28 mm |
| | | | TURNING TORQUE | Nm |
| | | | MATERIAL | 42CrMo4 Q&T |
| | | | REPT or (see notes) | |
| | | | DATE: | 25/05/2016 |
| | | | CHECKED: | LJM |



SLEWING
RINGS &
DRIVES

Orleton Lane, Wellington, Telford, TF1 2BG, UK
P: 01952 222300 F: 01952 242938
www.nbcbgroup.co.uk

QCB® is a registered trademark of NBC Group Ltd

QCB or NBC DRAWING NUMBER

FIG 1048 20 61 AA LM

QCB RS 11/2016

| REV | DATE | MODIFICATION | REVISED BY |
|-----|------|--------------|------------|
| 1 | | | |